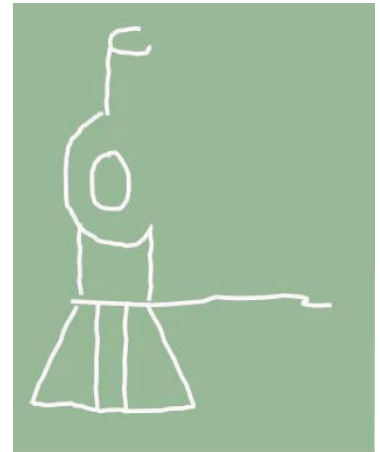


Appendix B: Public Involvement



All Aboard!

Contents

Program Description

Task Descriptions

Vision Advisory Team

Technical Advisory Team

List of Vision Advisory Team Meetings

Kick-Off Event

Posters

Post-It-Note Comments

Focus Groups and Interviews

Health Care Providers Roundtable

University of Southern Mississippi

William Carey University

University of Southern Mississippi/Medical District

Neighborhood Survey

Newsletters



City of Hattiesburg Comprehensive Plan Program Description

All Aboard! Getting on Track for Hattiesburg's Future

The theme for Hattiesburg's comprehensive plan is "*All Aboard! Getting on Track for Hattiesburg's Future.*" The theme is meant to reference Hattiesburg's history as a railroad town, and reflect the desire for this plan to be a collaborative effort of all residents, business-owners and community leaders. We hope to be *All Aboard!* in envisioning Hattiesburg's future, and we will bring this process to residents and business-owners through a series of stakeholder interviews, focus group meetings and city-wide community forums.

Community Involvement

We understand how difficult it can be to attract attention to a comprehensive plan which may not be perceived to have an immediate effect on residents' everyday lives. Throughout the planning process, we will use a variety of methods to reach the public:

- › City-wide meetings throughout all stages of the planning process;
- › "Quadrant" meetings in the northwest, northeast, southwest and southeast quadrants of Hattiesburg;
- › Corridor/District meetings in areas identified as being connected by geographic, social, and economic issues;
- › Neighborhood association and Council of Neighborhoods meetings—using the city's existing communication network to disseminate information and solicit opinions;
- › A comprehensive plan web site containing current plan information, calendar of events and opportunities to submit comments;
- › Community surveys available both on-line and on paper at public events and in public places; and
- › A comprehensive plan newsletter distributed quarterly to update the public on the plan's progress and inform them of upcoming events.

Plan Elements

The comprehensive plan will contain seven general elements: goals and objectives; physical, social and economic analyses; physical environmental conditions; land use and development; infrastructure, including transportation; community facilities; and implementation strategies. In addition, specific districts and corridors will be analyzed, including the following: Downtown Hattiesburg, Mobile Street District, East Hardy Street Corridor, Avenues/Hardy Street District, Broadway Drive Corridor, Edwards Street Corridor, Palmer's Crossing, USM/Medical District,



and West Hattiesburg. The planning team will hold public meetings and interview residents and business-owners to address land uses, transportation facilities, community facilities and civic pride in these areas.

Ad Hoc Committees

Two committees should be assembled to guide this planning process: the Comprehensive Plan Vision Advisory Team and a Technical Advisory Team. The Vision Advisory Team will contain 13 members appointed by the Mayor and City Council and two members representing the Planning Commission for a total of 15 members. This team will convene twice each month to hear presentations on the topics under each element of the comprehensive plan. The presentations will be made by respected professionals and community representatives who have expertise in each topic.

The Technical Advisory Team members will represent public and quasi-public entities who can help provide information about topics in their respective jurisdictions. All City departments should be represented. In addition, representatives from Forrest County, Lamar County, the University of Southern Mississippi, William Carey University, the Long-Leaf Trace Rails-to-Trails Commission, Historic Hattiesburg Downtown Association, Forrest General Hospital, Camp Shelby, and the Area Development Partnership will be invited to participate. The purpose of Technical Advisory Team meetings will be to gather information on each of the plan topics and to assemble a “wish list” of projects and plans. The Technical Advisory Team will not recommend the policies that will be contained in the plan; they will provide information to the Vision Advisory Team, which will be responsible for reaching consensus on the plan’s policies and recommendations.

Getting Started

Neel-Schaffer has already begun the process of scheduling events, preparing informational materials and gathering data for the plan. The first Vision Advisory Team meeting will be held Thursday, March 22, 2007 at 5:30 p.m. in the Hattiesburg Cultural Center. The purpose of this meeting is to welcome team members, discuss their roles, and generate excitement about this upcoming program. At this time, we request that the City Council consider prospective team members and submit the names of appointees to the Mayor’s office by March 1, 2007.



Vision Advisory Team Task Description

Qualifications

There are no specific professional qualifications for Vision Advisory Team members. Prospective members should desire the best for Hattiesburg and its future, be able to think comprehensively about long-range goals and how to achieve them, and be unbiased in considering the welfare of all neighborhoods, businesses and residents of Hattiesburg. The Vision Advisory Team will be stronger and more effective if its members are from a broad range of professions and have varied civic experiences and personal backgrounds.

Appointments

Two members should be appointed by each City Council member, and three at-large members should be appointed by Mayor DuPree. In addition, the Hattiesburg Planning Commission should elect two members to represent the commission.

Commitment

Vision Advisory Team members will be asked to attend semi-monthly meetings where they will be informed of a range of issues related to urban development, transportation, infrastructure, housing, public safety, and the overall state of the city. Using what they have learned at these meetings, team members will consider and prioritize capital improvement projects and recommend long-range goals and objectives. Prospective members should have schedules flexible enough to allow them to attend semi-monthly meetings, each of which should last approximately one hour. Additionally, this comprehensive planning program is scheduled to be conducted over a period of eighteen months. This should be conveyed to prospective members when they are asked to serve on the Vision Advisory Team.



Technical Advisory Team Task Description

Qualifications

The purpose of the Technical Advisory Team is to collect information that will be used in the comprehensive plan and to identify important issues that may require additional research and discussion. Team members will represent city departments and public/quasi-public agencies. This process will be an opportunity not only for team members to provide information toward the development of the comprehensive plan, but also to learn from team members about issues which may impact other agencies' work.

Meeting Schedule

Technical Advisory Team meetings will be held throughout the planning process. Initial meetings will be used to define the scope of each element of the comprehensive plan, and to inventory relevant information that could be gathered by team members. Once initial information has been gathered and relevant issues have been identified and discussed, team meetings will be reduced to an as-needed basis.

It is desired that Technical Advisory Team members be able to meet during the work day. Meetings should last no longer than one hour. Initially, the team will meet one to two times each month. After the initial information has been gathered, meetings will be held once every two months.

List of Vision Advisory Team Meetings

Meetings held between March 22 and November 29, 2007

- Meeting 1: Introductions and Team Workshop**
Johnny DuPree, Ph.D., Mayor
Kim Bradley, City Council President
- Meeting 2: Plan History and Program Coordination**
Agenda: Review meeting schedule, refine list of topics
Presenters: Gretchen Loftus, AICP, Neel-Schaffer, Inc.
Patricia Brantley, AICP, Neel-Schaffer, Inc.
- Meeting 3: History of “Neighborhoods Building Hattiesburg’s Future” Neighborhood Planning Program**
Agenda: Neighborhood Development, Council of Neighborhoods, Historic Districts
Presenters: Kara Drane, AICP, Forrest County Planner
- Meeting 4: The Natural Environment**
Agenda: Storm Drainage, Environmental Protection, Floodplains and Waterways, Emergency Preparedness
Presenters: Bennie Sellers, P.E., Director of Public Services
Randall Meador, P.E., AICP
- Meeting 5: The Character of Hattiesburg**
Agenda: Public Schools
Presenters: Alan Oubre, Ph.D., Hattiesburg Public School District
- Meeting 6: The Character of Hattiesburg**
Agenda: Population Characteristics and Housing Programs
Presenters: Brian Richard, Economic Development, USM
Deborah Conerly, Department of Urban Development
- Meeting 7: The Character of Hattiesburg**
Agenda: Current and Future Economic Conditions
Presenters: Angie Godwin, Ph.D., Area Development Partnership
- Meeting 8: Visioning Work Session #1**
- Meeting 9: Community Facilities**
Agenda: City Parks and Hattiesburg Zoo
Presenters: Clemon Terrell, Director of Parks and Recreation
Ann Jones, Grounds and Maintenance
- Meeting 10: Public Safety**
Agenda: Police and Fire Protection
Presenters: Major Billy Lane, Hattiesburg Police Department
Chief Webster, Hattiesburg Fire Department
- Meeting 11: Transportation, Part I**
Agenda: Bicycle and Pedestrian Facilities
Presenters: Herlon Pierce, Trail Manager, Longleaf Trace
James Moore, Moore’s Bike Shop
- Meeting 12: Visioning Work Session #2**

Meeting 13: Transportation, Part II

Agenda: MPO's Priority Projects, City projects, railroad crossings

Presenters: Christine Brown, Metropolitan Planning Organization
 Bennie Sellers, P.E., Director of Public Services

Meeting 14: Land Use and Development Mobile Workshop

Agenda: Commercial Corridors/Residential Neighborhoods

Meeting 15: Land Use and Development, continued

Agenda: Town-Gown: Southern Miss and Surrounding Neighborhoods

Presenters: Sid Gonsoulin, University of Southern Mississippi

Meeting 16: SMART Partnership and Visioning Work Session #3

Meeting 17: Downtown Hattiesburg Mobile Workshop

Meeting 18: Visioning Work Session #4

Meeting 19: Visioning Work Session #5

Comprehensive Plan Kick-Off Event

Below is an example of the posters displayed at the Comprehensive Plan Kick-Off event, held June 1 and 2, 2007. Thirteen posters were displayed with the following topic headings: Businesses and Commercial Districts; Civic Pride and Beautification; Downtown Hattiesburg; Infrastructure; Libraries and Community Facilities; Neighborhoods and Housing; Parks and Recreation; Public Safety; Schools, Colleges and Universities; Sidewalks and Bikeways; Social Services and Health Care; Streets, Highways and Buses; Zoning and Code Enforcement. All comments received at the Kick-Off Event are displayed on pages B-9 through B-35.

SIDEWALKS AND BIKEWAYS



POST IT!

Using the *Post It* notes you received upon entering this meeting, post your ideas, thoughts and suggestions for Hattiesburg on this poster.

Comments will be used to identify community goals, projects and policies to guide Hattiesburg for the next 20 years.

• Where do you currently walk?

• Where are sidewalks needed?

• To what places would you like to walk—shops, schools, downtown, parks, zoo?

• What would make your walk more pleasant—trees, lighting?

• Do you bike to work or school?

• Do you bike for recreation or exercise?

• What is your favorite biking location or destination?

• Any other comments, suggestions?

PLACE POST-IT NOTES HERE

City of Hattiesburg



2008 Comprehensive Plan

Businesses and Commercial Districts

Post-It Note Comment

- * Don't put business zoning in neighborhoods. Bus routes are good!!!!
- * Grocery shopping in Hattiesburg is a joke. We need more choices East of Hwy 49.
- * Upscale bodega downtown.
- * Restrict commercial encroachment in historically residential areas.
- * Whole Foods, Original Pancake House, Trader Joes.
- * Recruit full-size, fully-stocked whole foods market. (Natural foods/organic foods grocery store).
- * Better opportunities for Edwards St. Tuscan Ave. residents – Grocery store, affordable shopping.
- * Choices are limited in the William Carey area, in regards to organic foods.
- * No quality groceries downtown.
- * In downtown more small business with price that are affordable to rent.
- * Access to groceries and liquor are sorely lacking in downtown.
- * Need high-end grocery store downtown whole goods.
- * Coffee shop, internet café, incentive to move businesses downtown.
- * Development of Palmers, entertainment, better process in low socio-economic area, allow opportunities for those who are willing but not experienced.
- * Smaller version of "Whole Foods" on east side of town – or some mom and pop grocery store.
- * Looking forward to completion of "The Bakery".
- * Do not allow commercial interest to drive/run/own the process. Look at West Hardy if you wonder why.
- * Ward 5 holds the greatest potential for economic growth and development. Let's make it happen.
- * We need a mixed-use neighborhood between the University and Hospital.

Comprehensive Plan Kick-Off Event

Businesses and Commercial Districts

Post-It Note Comment

- * USM student hang-out downtown.
- * Give development incentives on Hardy Street and Broadway Drive.
- * Yes, but I live between Hwy 49 and I-59.
- * Small business loan programs (via private sector).
- * Myrtle/Duane Street. Take care of basic services before moving on.
- * We and many others would like a full service upscale grocery similar to that offered by Whole Foods chain. We would like to see more builders keeping as many existing trees as possible when building new homes and subdivisions. Maybe some ordinance about this; especially our native and hardwood trees. Perhaps a buffer of trees between lots also. We would like to see more public parks in housing developments which homeowners would be able to access by walking or riding a bicycle. Sidewalks and walking trails would be another good addition to neighborhoods. We would love to see the I-Hop restaurant build on Hwy. 98 (or at least clean up the one we have), and/or a Panera Bread restaurant.

Civic Pride and Beautification

Post-It Note Comment

- * This is not an introduction but expansion of leisure activities for those with disabilities.
- * Leisure and enriching activities for inter-generational audiences that are not contact sports.
- * Pipe open ditches in residential areas.
- * I-59 at 98 needs to look beautiful, inviting.
- * Hardy St. between Southern Miss and downtown looks terrible especially east past Temple.
- * Should have standards businesses should meet in regards to overall look and green spaces.
- * Tear down dilapidated Houses! Bowling St.
- * Tear down dilapidated housing. Penalize slum lords.
- * Active and timely code enforcements.
- * An action line that gets action.
- * Need a Senior Center that is really a Senior Center and not just one that is said to be one.
- * Improve drainage in Myrtle Street and Duane Street areas.
- * Purchase the "Hudson Valley" /and (huge natural amphitheater on Bonhomie Rd – South) develop into large outdoor concert facility (Bring well-known performers).
- * Cultural and Heritage events that expand in depth and time beyond ADP's current ones.
- * More entertainment downtown and in the city. Plays at Saenger theatre.
- * Need lighting downtown, also seating and landscaping, change name of Mobile St. Ren. Festival because out-of-town people think it involves jousting and middle ages.
- * Local music (jazz/chamber) festival, film festival.
- * Local music, outdoor music fest.
- * Those based on music of the South.
- * Put more advertisements out for people to come out.

Comprehensive Plan Kick-Off Event

Civic Pride and Beautification

Post-It Note Comment

- * We need to have a region-wide arts festival. See Jay Dean.
- * More downtown festivals would be great, especially in the spring and summer; family-oriented festivals.
- * The new areas downtown are really nice especially on Walnut.
- * Put more small business in neighborhoods.
- * Areas such as Broadway Drive have seen landscaping improvements by the city. Hardy from 49 to downtown needs landscaping.
- * Plant more oaks on our thoroughfares. Host an all Mississippi Blues Festival.
- * Green spaces. Build up landscaping as expansion of these by city (Ann and crew).
- * Green Space.
- * Large trees.
- * Landscaping.
- * Green spaces. Diligent maintenance of important buildings; City Hall, Depot, Cultural Center.
- * Tree planting and smaller signage Hardy – downtown.
- * Green spaces kept tidy.
- * Pass out more trees and flowers.
- * Preserve more green spaces and wetlands.
- * Leaving older trees instead of permitted so many apt complexes to bulldoze them. Older trees are more important to environment.
- * A day for work parties for neighborhoods.
- * Put rubberized surface (like Dahmer playground) in all city playgrounds.
- * Sidewalks and repair those that in place now. Parkhaven N.A.

Civic Pride and Beautification

Post-It Note Comment

- * Identification signs on 59 and 49 that advertise the zoo.
- * Street repairs. No future with all money tied up in patchwork.
- * Garbage schedule needs to be better communicated and followed. We need more recycle efforts and better info on how and where.
- * Garbage collectors need to stop throwing peoples garbage cans in the street.
- * Restore full funding to the zoo.
- * Restore full funding to zoo. Finish Comprehensive plan implementation.

Comprehensive Plan Kick-Off Event

Downtown Hattiesburg

Post-It Note Comment

- * Priority given to downtown lighting and parking.
- * 1.) Install historically correct street lighting. 2.) 4-lane Main Street from Hwy 42 to Hwy 98 bypass (10 miles).
- * Lighting and pedestrian access all over.
- * Outdoor music every weekend.
- * We need a city official who is our cultural coordinator – who books city events and coordinates them with USM/Downtown Events.
- * Keep façade grants going.
- * More local art! More living spaces!
- * Downtown is the heart of the city! Great food and music! The Saenger!
- * Downtown Hattiesburg needs a big clock on main street for the working people shrine at night like a temple.
- * Like having restaurants downtown.
- * Great job! Let's do the rest of the city!
- * Too far to drive.
- * Charm.
- * Continue positive efforts.
- * Lots of great progress in past year – please keep momentum going!
- * It is the Heart of our area! Need to keep it beating.
- * Cultural ground zero for the area.
- * City should repeat incentives for movement to downtown, and sometimes for unkept vacant property.
- * Make the rest of Hattiesburg look as good as the depot project.

Downtown Hattiesburg

Post-It Note Comment

- * Wonderful! Continue Building. More Entertainment. Better ways of communicating. Tell us what's going on in town.
- * Change downtown catch phrase. "It's What Hattiesburg is coming to!" is old sounding, and it has a dangling participle. How about...."It's All Happening in Downtown Hattiesburg!"
- * Great job on train depot and fountain.
- * Give more development incentives and advertise downtown on TV.
- * Please do all that is possible to save old HHS – would love to have USM Art Dept. as new anchor downtown.
- * Visual interest, people interaction, local flavor, history, art/music/culture.
- * I propose establishing a downtown museum with railroads and forestry industries in Hattiesburg with pictures oral and written histories. Add Mobile St. to downtown Hattiesburg. Attach Mississippi and Federal Historical Markers on Buildings in downtown Hattiesburg.
- * Housing Units \$400 – 800/mo downtown.
- * Fill building with offices – "Legal" area – the business will follow.
- * USM and William Carey offering courses downtown or somewhere in the city – off campus site.
- * Bodega, Bakery, Ice Cream Parlor.
- * Different restaurant venues.
- * It is not like a mall. Has variety.
- * Love downtown. Need to attract more jobs, industry and provide downtown housing/apts.
- * Deli with take out meals for those of us who work downtown.
- * Restaurants and shops. Make downtown the center for Hattiesburg. Paying bills here would be convenient for citizens.
- * Glad to see the pizzeria – need apartments! Period street lighting and lots of it.
- * Provide HPD a new building!!!

Comprehensive Plan Kick-Off Event

Downtown Hattiesburg

Post-It Note Comment

- * Overpasses for railroad tracks to insure rapid first response for police, fire, ambulance.
- * Streetscape improvements!!!
- * Rail crossing improvements.

Infrastructure

Post-It Note Comment

- * Renegotiate cable franchise to include subscribers fees for local PEG (Public Edu Govt) Channel. Use existing TV Studio @ FBC for this purpose in 12/08.
- * Ditches behind 700 block were damaged (cement sided, dirt) – not restored in almost (2) two years.
- * Preserve wetlands to help prevent future flooding.
- * Flooding isn't too bad, but the sewer system gets really backed up when it pours. Ditches can't handle the abundance of water.
- * Streams need to be rehabbed using native plants instead of concrete.
- * 714 Duane St. Drainage ditch runs over when it gets dry. It emits a bad smell or scent.
- * Make Gordon's Creek a feature not a littered ditch.
- * Repair rock wall on Gordon's Creek – near Adeline/Hwy 49. Clean the creek of debris.
- * Close large open ditches in neighborhoods.
- * Please facilitate completion of and publication of new floodplain designations!
- * Power lines should be buried in Historic Districts and Downtown.
- * Put lines underground! Go solar! Go green!
- * More: 1.) "Green" tech. 2.) Underground utilities along major streets – esp. Hardy 3.) Sidewalks – esp. Hardy.
- * The Duane Myrtle Street Neighborhood needs water, sewer, and drainage repairs that we have requested multiple times and been told would be done.
- * When building roads, sewer, electrical etc. Create right of way to accommodate growth. Example. If in 20 years you will need wider roads, larger water and sewer mains put them in.
- * Amend the existing Convention Center tax law to split revenue 50/50 to city and put this toward infrastructure replacement/improvement esp. water and sewer.
- * More services, (cable, telephone, internet) on the south side of town near WCU. Bowling Street.
- * Recycle. Use schools to educate kids to separate garbage.

Comprehensive Plan Kick-Off Event

Infrastructure

Post-It Note Comment

- * Enforce recycling codes. Make it mandatory.
- * Paper recycling sites at each school.
- * City should recycle.
- * Initiate a recycling program!
- * Recycle. We drive over. Would be good to have it picked up even once monthly.
- * Let's get the lagoons in shape.
- * Repair sidewalks, address drainage problems -- Elizabeth Ave, near Dabbs.
- * Gotta fix these streets. We are judged by our streets. Many are terrible.
- * A comprehensive plan for keeping streets resurfaced "x" years. CDBG needs to be used for ditch and drainage, sidewalks especially for annexed areas (Irene Chapel and Palmer's Crossing).
- * I'd like to see the city provide adequate city services to all neighborhoods. I have a temporary water line in my backyard that has been there since Katrina. I want someone to be honest enough to tell the truth and do what they say to repair city damage during Katrina (Myrtle St./Duane St.).

Libraries and Other Community Facilities

Post-It Note Comment

- * No community centers west of 49?
- * Are we ever going to have a real Senior Center?
- * Please continue forward with plans for Recreation-Education Resource Center at Wade Kennedy Site – would also be good destination point for Longleaf Rails to Trails.
- * Restore old community facilities and make use of them.
- * Newcomers need nice homes to buy so they can use our wonderful library – without paying the fees.
- * Start the library on wheels.
- * Love the library – need more books on tape.
- * Best public library in state with great director and staff.
- * Library is one of our greatest assets. Love the program and the staff always shows it off to visitors.
- * The library is a great resource. Sunday afternoon hours would be great.
- * Library needs some Sunday afternoon hours. Activities for seniors.
- * Need libraries (smaller ones) closer to neighborhood. West 7th St. too far just to come downtown.
- * The library is beautiful. It doesn't stay open long enough, though.
- * Libraries need more activity for the children of Hattiesburg in the Neighborhoods please.
- * Increase library funding and hours.

Comprehensive Plan Kick-Off Event

Neighborhoods and Housing

Post-It Note Comment

- * Tear down dilapidated houses and punish slum lords.
- * Love my neighborhood – Historic District, but need to clean up “slum-lord” rental properties.
- * Code enforcement, police presence, more trees.
- * Tear down dilapidated housing. They are such an eye sore. Bowling Street.
- * Enforce codes.
- * Better code enforcement in neighborhoods. Check corner of S. 22nd and Adeline! Deplorable.
- * Enforce codes for daycare and auto sales. Stop illegal operations out of homes.
- * Demolish unkept houses!!
- * Moderate housing to build up property values. Stop saturating “certain” neighborhoods w/ low income housing.
- * Less emphasis on student housing more on affordable rental property for middle-aged divorced, widowed tax paying citizens.
- * Stop high-density development from occurring in R-1 areas. (Pinehills).
- * More reasonably priced rentals, especially for mature single people.
- * We’re getting too many apartments!
- * 1. Establish program for homesteading on abandon house with financial aid. 2. More city public housing in condominium state.
- * Programs to repair old houses, less restriction when repairing (zoning, taxes, inspection fees), self awareness program, parental information, better ads of neighborhood association meetings, incentives to improve community involvement, get children involved.
- * Allow, support, promote modern -“off-site-build”/”factory-built” homes and apts. (see State Supreme Court Ruling v. Petal in 1997).
- * Work on city subdivisions so all don’t have to move to Lamar Co. to find a good neighborhood. Some private residents of elderly.
- * Promote home ownership, provide basic services to exiting homes before adding services to new areas. Treat homeowners like citizens – just as business owners are treated.
- * Stop multiple people who are unrelated from living in single family housing. One resident per bedroom when unrelated is enough.

Neighborhoods and Housing

Post-It Note Comment

- * We need affordable housing in all areas in Hattiesburg, not just in low income areas. Loud music is too prevalent in my neighborhood.
- * More affordable housing projects not just neighborhoods were my kids are afraid to play.
- * Help to fix up some of the homes for people to live in.
- * Quiet and Caring – Feels Safe.
- * Downtown. Growth of young families.
- * Quality (historic) architecture.
- * I have great neighbors. They care about the city.
- * Katie, John, Dabbs Street Neighborhood.
- * Thames area better lighting – street improvements.
- * Apartment complexes do not make a neighborhood. Protect neighborhoods.
- * Need Emergency Services set up using neighborhood and church. People who know each other and can insure everyone is taken care of. Have leader trained so that the sick and elderly can have someone check on them and obtain services for them. Katrina did not have this aspect.
- * Provide help to residents in removing dead and dangerous trees. Assist them in finding help that is affordable. Also help with broken drives and walks is needed.
- * Better animal control – too many stray dogs that use restroom in your yard. Bowling Street.
- * Enforce noise ordinance.
- * Tear down known crack houses near elementary schools. Tear down crack houses period. Bowling Street.
- * Shut down known crack houses less than 150 feet from schools. (Walnut St.)
- * Enforce noise ordinance for loud cars. “Boom, Boom”.
- * Enforce noise ordinance. People should be able to have quiet at night as we had in the past.
- * Project at intervals of 5, 10, 15, 20 years projected growth of city. Plan city to accommodate growth.

Comprehensive Plan Kick-Off Event

Neighborhoods and Housing

Post-It Note Comment

- * Various neighborhoods are experiencing urban sprawl. It's important that city officials be aware of the impact commercial and residential developments will have on existing neighborhoods. Smart growth needs to be emphasized, e.g. land use, green space conservation, infrastructure requirements.
- * Please help keep older parts of city and downtown neighborhoods as single family residential – and promote walking communities.

Parks and Recreation

Post-It Note Comment

- * Keep pets in your yard.
- * Kamper Park baseball field needs to be designated a historic site.
- * Would like to see smaller Neighborhood playgrounds implemented geared towards little ones.
- * Playgrounds and parks to kids out of the streets.
- * Small neighborhood pocket parks. Please add space so children can walk to.
- * 33 P & R facilities E. of 49, 2 P & R facilities W. of 49, 1 P & R facility in Ward 3. Large disconnect with population base.
- * Our parks need trees replaced and trimmed.
- * Park off of East Hardy.
- * Kill weeds around parks.
- * Need more social green space in midtown areas.
- * Protect parks downtown.
- * The tennis courts at Kamper & Vernon Dahmer need resurfacing.
- * The parks and recreation. Parking lots need painting so the people know how to park day and night.
- * We need more parks esp. Western Hattiesburg.
- * Better P & R leadership – find experienced director and listen to him/her.
- * Community garden? Work for inmates in progress – based program?
- * We need a dog park, more green space everywhere, bike lanes.
- * Expansion of Chain riverside park from Bowie St. to East Hardy St. 1.) Walk Trail 2.) Water action – a. canoeing 3.) Fishing Pier built on the intersection of Gordon Creek and Leaf River. 4.) New walking trail established on the old railroad bed from Mobile St. to Bowie River with a park and sandy beach.
- * I'd like to see somewhere kids could play basketball and baseball in pick-up games rather than having them in the streets.

Comprehensive Plan Kick-Off Event

Parks and Recreation

Post-It Note Comment

- * Need another tennis complex like the one in Meridian.
- * Offer more for kids to do, esp. during the summer. Summer camps, baseball, softball will keep kids busy during the summer months and out of trouble.
- * More arts related programs for all ages.
- * More leisure /enriching events for seniors that would include intergenerational shared time.
- * Put exercise stations in all city walking trails/parks to encourage more exercise.
- * Youth conferences – event for teens in our city.
- * Recreation other than park, water park, game room (East H'Burg), skating park, more social gathers.
- * State tournaments, festivals, regional tournaments – facilities to entice these events.
- * Implement recycling program to benefit local kids/parks.
- * Connect neighborhoods to all recreation facilities by sidewalks, pedestrian paths, and bike lanes.
- * Kamper Park and Zoo when little ones visit.
- * Totally redo Kamper Park.
- * The zoo. Make some wetlands into parks.
- * 2nd pavilion at zoo – facilities to have picnics.

Public Safety

Post-It Note Comment

- * Get rid drugs! Crack kills communities.
- * Find a way to shut down or move known drug houses faster.
- * So pleased to have the free weather radio. Very comforting in storms.
- * Need leaders from the city, hospitals, churches, neighborhood groups, etc... to develop a comprehensive plan for emergency situations (infectious disease pandemic, hurricanes, tornados) -- should have multiple areas pre-designated as sites to go to for assistance (i.e., several ice/water pick-up sites like one in each Ward; where do volunteers go to be assigned to help the elders?) More neighbors need to get to know their whole neighborhood.
- * Make neighborhoods and streets safe.
- * Better pay to firefighters and police.
- * Police Patrol "Bowling St."
- * HPD Officers on: 1.) Bikes 2.) Motorcycles 3.) Horses 4.) Foot Patrol.
- * New Police Station! More better paid officers. Help the good guys !!
- * Thames area. Does feel safe and has for 40 years.
- * Provide police with training to use discretion and people/verbal skills to solve problems.
- * New police stations.
- * New building for HPD! More officers.
- * For the most part, I do feel safe. Sometimes there are just too many people walking the streets late at night. Can we get consistent street lighting?
- * More police patrol. Bowling St.
- * Police Sub-station at Depot. Good Idea!
- * More street lights.
- * More police officers.

Comprehensive Plan Kick-Off Event

Public Safety

Post-It Note Comment

- * Enforce existing noise ordinance to the letter. “Culturally biased”? No – just good citizenship.
- * A recent resident who has lived in South Carolina, Texas and Alabama said this is the first time she has felt unsafe – too many drug pushers.
- * We need a better downtown patrol at night to prevent arson as happened at old HHS building.
- * Give another raise to police. Initiate foot and bike patrol again.
- * Maintain quality police and fire personal and facilities and jails.
- * Interface public safety with infrastructure eg., sidewalks, streetlights, etc.
- * Safety stops at Hall Ave.

Schools, Colleges and Universities

Post-It Note Comment

- * Have high expectations, strong curriculum, parental accountability. Students will rise to level of expectations.
- * Our K-12 schools have re-segregated. Consequences?
- * Lower crime rates by not using jail as a “timeout” – start with younger kids – incentives to be smart and stay in school.
- * Work to have racial parity in schools.
- * Burger Middle School floods when it rains, making it difficult for kids to get to classes without getting their feet soaking wet. It’s really bad.
- * If I could afford to send my child to private school, I would. Especially a Christian School. Private Schools are less tolerable, concerning behavioral issues. The Public Schools, on the other hand, allow behavioral issues to shuffle along throughout the system.
- * We need English help for students who have non-English speaking parents.
- * Discipline (lack) remains the #1 reason folks will not send kids to HPS – change that – no more excuses.
- * No direct instruction, highly qualified teachers, more tutors, better lighting in older schools and paint, no alternate route, better discipline procedures, culture oriented, parental involvement. Colleges and Universities are fine.
- * Stop drop out rate. 40% is criminal.
- * Teach!! Quit lowering the bar to make statistics look better! (They are not!).
- * Need to keep our student in school – at least through high school. Include more arts in curriculum.
- * The public schools are falling apart, especially Hawkins, HHS, Woodley. New electrical wiring is needed, especially to accommodate the demand of new technology.
- * Teach on grade level.
- * Increase teacher pay.
- * Ms. Wimbish has done a good job. Keep it up.
- * Highest paid supt. In state should not equal a level three school.
- * Please check into redrawing city school districts – many children are being bused across town past schools closer to their homes. Long rides + early pick up times not good for learning/health – help make schools accessible to families – be sure there are safe sidewalks 1 mile radius around each school.

Comprehensive Plan Kick-Off Event

Schools, Colleges and Universities

Post-It Note Comment

- * City support (bond issues) for ongoing expansions of USM Athletic facilities (football, baseball, basketball).
- * Rebuild Old HHS – even 3rd and 4th floor auditorium, as close to original as possible, ASAP.
- * Let USM take care of their own neglected facilities. Not fair to double-dip on taxpayers.
- * The university needs to work closely with local schools to educate our kids.
- * Support – USM – they are the economic lifeblood to this hub city.
- * More cooperation between universities and city.

Sidewalks and Bikeways

Post-It Note Comment

- * Bike lanes through downtown.
- * Bike lanes.
- * Longleaf trace extended all the way to Duncan Lake.
- * Hurry up and extend Trace to downtown so that we can bike from downtown to USM.
- * What bikeways? Offer trails, sidewalks, and safe road edges.
- * Dangerous to bike.
- * Longleaf Trace extended to downtown.
- * Adopt the attached “complete streets” policy so that all new streets and street renovations accommodate the needs of all users including cyclists and pedestrians.----- “ The safety and convenience of all users of the transportation system including pedestrians, bicyclists, transit users, freight, and motor vehicle drivers shall be accommodated and balanced in all types of transportation and development projects and through all phases of a project... so that even the most vulnerable – children, elderly, and persons with disabilities – can travel safely within the public right of way.” [Currently adopted by the City of Chicago]”.
- * Fix lights on stadium drive so that they do not blind drivers headed to downtown at night.
- * We need programs to teach kids how to walk and bike safely. They do not move for cars, ride all over the street, and wear dark clothing at night with no lights.
- * I would love to see sidewalks on busy 34th Street.
- * Hattiesburg needs to become more pedestrian friendly. Therefore, it is imperative that city officials make this city more accessible for those choosing to walk or ride bicycles by providing sidewalks especially in high traffic areas.
- * More curb and guttering and sidewalks everywhere – esp. Mamie and Adeline.
- * More handicap accessible sidewalks, finish bike trail, add bike lanes to large streets.
- * All downtown and historic neighborhood sidewalks need to be repaired and maintained to encourage walking.
- * Pedestrian - USM to Downtown sidewalks in historic/downtown.
- * More sidewalks, repair, bike zones, caution signs for pedestrians.

Comprehensive Plan Kick-Off Event

Sidewalks and Bikeways

Post-It Note Comment

- * Walk park in Katie Ave. and downtown.
- * Sidewalk on Fredna Ave. from King to Dabbs.
- * All areas need sidewalks and bike trails.
- * Make it safer for people to take walks.
- * Sidewalks are very badly needed on streets off of Tuscan and Ashford Streets. Bike trails East of Hwy 49 would be great.
- * More sidewalks repair ones already in place Parkhaven N.A.
- * More sidewalks and bikeways.
- * When my wife and I visit other cities – Montréal; Billings, MT; Mason City, IA; etc. We spend many hours walking on the sidewalks that are throughout these cities or biking on the miles and miles of bike lanes. The state insurance companies and individuals in Mississippi spend millions of dollars annually to fight obesity and dying yet Hattiesburg has almost no sidewalks. To walk here you can either walk in the streets, which is very dangerous, or drive to a track or to the trail. In my view, Hattiesburg desperately needs sidewalks and bike lanes throughout the city, something that would not only provide our citizens with healthy transportation choices, but might also cut down on automobile traffic.
- * Expand the already active sidewalk construction efforts.
- * Bike lanes! Add sidewalks!
- * Comprehensive sidewalk construction and maintenance program needed. Bike lanes and alternative trans. Allowances needed on road const.
- * 1.) Sidewalks 2.) Street curbs 3.) Ditches cleaned and fenced 4.) Trees trimmed 5.) More street lights 6.) Street crossing markers.
- * Myrtle/Duane Street. Take care of basic services before moving on.
- * I would like to see future growth include a comprehensive sidewalk project. Specifically as a resident of the North Avenues (between Hutchinson and U.S. 49), I would love to see a long sidewalk along Quinn Street, with at least one or maybe two pedestrian bridges cutting south over Gordon's Creek between the high school and the park and a north-south sidewalk from the Longleaf Trace to Kamper Park, most likely along Park if right of way and or easements could be obtained along that path.

Social Services and Health Care

Post-It Note Comment

- * Need better animal care programs – enforce humane treatment of pets.
- * Hattiesburg is blessed with good medical care at 2 hospitals.
- * Recruit to Hattiesburg: 1.) VA Hospital 2.) Catholic Hospital 3.) Baptist Hospital 4.) Alternative Care (“Natural”) Hospital.
- * Health Care in neighborhoods where people can walk to.
- * Great health resources! Interface health care and key facilities.
- * Health services for single adults who don’t qualify for Medicaid but make less than \$30K – can’t afford health insurance.
- * Additional school-age and preschool medical care – Affordable.
- * Additional affordable senior medical care.
- * Need community medical clinic in lower income area with resources for 1.) AIDS, STD, Sexual Education. 2.) Cooling center for the poor and aged. 3.) Mental Health Community Center.
- * Need more drug rehab/work programs.
- * More services for the elderly and shut-ins.
- * I wish to see a city emphasis on worship, strong family marriage and opposition to immorality, drugs, etc.
- * Make people pick up litter to get money.
- * Need more options for young adults to get help with employment.
- * Can we get a local job corps program in town?!?
- * Activities for single adults.
- * Activities for senior adults.
- * Community garden? Seniors and kids center designed for interaction?
- * We need services for drug addicts and homeless to rehabilitate, not just tolerate.
- * Assistance with drug addicts and their children, self awareness programs, prompt ambulance services.
- * More programs for low income housing and homes.

Comprehensive Plan Kick-Off Event

Streets, Highways, Buses

Post-It Note Comment

- * Need trees, landscaping, bike paths throughout Historic District.
- * Repave streets. Bowling St., Service Dr.
- * More sidewalks, trees, and bike paths. Children at play – lower residential speed limit.
- * Improve the fire company to avoid insects —ditches and insect control.
- * Better access to bus route flyers – and improve main bus stops.
- * We need bus shelters and clearly marked bus stops. It's hard knowing where the stops are, and when it's too hot or raining, I'm not encouraged to take the bus.
- * Bus routes are great. Advertise on TV.
- * Promote bussing as a convenience and a “green” choice.
- * Free public trans for those who can't afford.
- * Public transportation can work.
- * Need regular transportation all over town for senior citizens who should not drive. Need more red lights in high density neighborhoods.
- * Public transportation is limited. We also need it in rural areas that also have businesses.
- * Need a public transit system that is regional – so you go and come from outside of Hattiesburg and into Hattiesburg (Regional -- Lamar County, Forrest County, Petal and Hattiesburg plan).
- * Plan for rapid transit and E-trolley, bus, etc.
- * Put a University downtown and WCU-downtown trolleys!
- * More signs directing to downtown from all directions – esp. Hwy 98 E.
- * 1.) Connect East and West Hardy Street. 2.) Connect Hwy 42 and East Hardy St. on West Bank of Leaf River to create viable “waterfront”.
- * Develop a strong preventative maint. plan for road overlays.
- * Pave Roads near WCU! Bowling Street, Service Dr., Country Club Dr.
- * Repave streets.

Streets, Highways, Buses

Post-It Note Comment

- * Thanks for repaving and repairing so many streets during this pass year – definitely makes a difference – keep up the good work.
- * Need a four way stop sign on Dabbs St. and Hall Ave.
- * Repave Streets. Bowling St and Service Dr.
- * Dabbs St. needs paving.
- * Need Interchange I-59 and Lincoln.
- * Hardy Street from Downtown west.
- * New “4th Bridge” to Petal via: Connect East Front and East Pine St. in Hattiesburg to East 8th, etc., in Petal.
- * There are several short streets that have brick under the pavement – could some be restored?
- * Full street lighting for: 1.) All of Hwy 49 2.) Hwy 98 West (West Hardy St.).
- * Asphalt over pavers is inefficient, more costly and less attractive.
- * Major construction should take place on streets where pot holes are prevalent; not just patch work. Penton, Cypress, Dabbs, Katie are in need of major repairs.
- * Finish repaving, filling pot holes and marking streets.
- * Against new exchange off Hwy 59.
- * Improve streets (East Hattiesburg), more traffic lights in busy areas.
- * Pave Adeline St. pot holes big enough to swim in.
- * No! to I-59 interchange at Lincoln Road – It’ll all be paved over in 5 years!
- * South Hampton Rd. needs repaving.
- * Install culverts in the ditches either side of Hwy 49 – especially from USM to Forrest General (safety and aesthetics).
- * Repave streets! Trash on Westover, etc.
- * I am concerned about more commercial land uses along Lincoln Rd. if the new exchange is built!
- * Against more commercialization!

Comprehensive Plan Kick-Off Event

Zoning and Code Enforcement

Post-It Note Comment

- * 1.) Inhumane treatment of pets 2.) Dilapidated rental houses.
- * Add direct fee – fines for citations and skip court summons.
- * Cars being sold on yards at Myrtle St. and Duane intersections of Hutchinson.
- * Enforce codes! Enforce ordinances! Don't zone for business in residential areas!
- * Have a better action line! Forms and Issues to code enforcer who contacts those who report violations.
- * Hire competent code enforcement officers. Not leadership or accountability.
- * Hire more inspectors.
- * House on Walnut and Hall, many others are shameful. Demolish enforce codes!
- * Let's make sure the codes on the books are enforced and disseminated to all citizens.
- * More code enforcement – doesn't seem the ones we have are doing their jobs – not accessible either.
- * More Code Officers w/ better accessibility.
- * More officers, yes.
- * Neglected properties, junk cars, and slack construction practices make neighbors look bad. Do more to make ALL neighborhoods look good in Hattiesburg. And not more multi-family housing in single family residential neighborhoods.
- * Parking in yards. Council has passed law now enforce.
- * Some people have too many broken down vehicles in their yards. Some houses need to be torn down... they pose a safety hazard to our community.
- * This is a difficult one but the City must remain tough on ordinances passed.
- * Block down town for pedestrian nights out around block of Main, Front, Mobile, Pine.
- * Support and Promote factory-built ("manufactured") homes and apts. for affordable housing (see MS Supreme Court - v - Petal, 1997).
- * Allow more mixed-use zoning.
- * Revise land use code!

Zoning and Code Enforcement

Post-It Note Comment

- * Plan and zone for the future. At least zone. Don't let Hattiesburg become a urban nightmare.
- * Planning must be given priority.
- * Consult neighborhood representatives when planning or zoning in their area.
- * Train Planning Commission members.
- * Is there a code we could enforce for selling drugs in our neighborhood? Can anybody help us?
- * Keep loud! Music Down (Police Patrol) "Bowling St.".
- * Too much loud "music".
- * Beverly Hills Road. With 8-900 new student apartments going up entering Beverly Hills Road. Rezoning going on this week, June 6, for more apartments. Big trucks using Beverly Hills Road, now with construction more big trucks. Big Trucks. Need to keep single family housing -- not just for low income.
- * Follow campaign contributions when zoning is an issue – listen to people; they often know what's best.
- * Make sure zoning considers residents before business.
- * Need more zoning.
- * Pass ordinances that penalize landlords who do not monitor their properties/tenants. Use public nuisance laws; post landlords names and addresses on billboards.
- * Enforce zoning codes: daycare, auto sales, parking. Restrict number of unrelated people in single family homes. Very important!
- * All of the above. North Main.
- * Myrtle/Duane Street. Take care of basic services before moving on.

Focus Groups and Interviews

Health Care Providers Roundtable September 28, 2007

A Health Care Roundtable was held September 28, 2007, to discuss local health care issues and the Comprehensive Plan. Participants included representatives from Wesley Medical Center, Forrest General Hospital, Southeast Mississippi Rural Health Initiative (SeMRHI), Student Health Services at the University of Southern Mississippi (USM), and a representative from the Mississippi Department of Public Health.

Agency representatives provided information on the services offered at each facility and the group discussed commonalities and interrelated services provided to residents of the greater Hattiesburg area.

Hattiesburg's health care industry is a major contributor to the city's diverse economic base and continues to be the "Hub" of South Mississippi by providing the latest technology and state of the art equipment. According to the Area Development Partnership's recent "Healthcare Impact Study," conducted by the Economic Development Resource Center at USM, the ratio of doctors in the Greater Hattiesburg Area is 464.7 physicians for every 100,000 persons, which is a significant increase from the national average of 169.7 physicians per 100,000 persons.¹ All of the roundtable participants agreed that Hattiesburg has a bright future at the forefront of the health care industry.

The meeting revealed the following list of shared goals that can be recognized by health care providers and the City of Hattiesburg to enhance the quality of life for all residents:

1. Population and Medical Insurance Issues: Participants noted that county health departments no longer serve a majority of the uninsured, particularly the pre-natal care program recipients. Health department activities have been reduced to providing statistical information regarding immunizations, disease prevention, and promotion of good health campaigns.

The Mississippi Department of Health lists Mississippi's top health problems as follows: infant mortality, diabetes, and obesity. In addition, tuberculosis and communicable diseases are on the rise due to local immigration of non-English speaking populations.

As county health departments reduced individual patient health services, the number of visits to local hospital emergency rooms for primary, non-emergency health care has increased. In 1979, the Southeast Mississippi Rural Healthcare Initiative (SeMRHI), funded through federal monies, has emerged to accommodate those without a primary health care provider.

One of SeMRHI's goals is to help those who are insured, under-insured, or uninsured to find a medical "home" and reduce or eliminate the use of hospital emergency rooms for primary care. The SeMRHI networks with local hospitals, clinics and pharmacies by providing qualified patients with vouchers to offset the cost of medical services (X-rays, special tests, etc.) and medicines.

2. Mass Transit to Medical Facilities. The City of Hattiesburg offers a mass transit system to the general public with route stops at or near major medical facilities. Special medical transportation is not available to the average citizen. Roundtable participants agreed that the current perception of the city's mass transit system should be changed to promote ridership from a wider range of the population. To increase ridership, participants recommended a promotional campaign and, perhaps, a new look for buses and facilities.

3. Public Awareness and Promotion of Preventive Measures: Partnerships with Forrest General Hospital, Wesley Medical Center, USM, and the City of Hattiesburg have been successful in promoting a number of healthcare events such as walks, runs, and bicycle races. Participants recommended expanding these partnerships to include local media—radio, newspaper and television—to increase awareness of public health events.
4. Partnership Forum: Roundtable participants agreed that a semi-annual meeting—a “partnership forum”—with representatives from local health care providers and city officials would benefit all. The purpose of the forum would be to discuss current issues, trends and challenges.
5. City Website Link: A link on the City’s website entitled “Health Care” listing all of the local institutions could be used to assist university students, military personnel, newcomers, and visitors locate service providers. The information could also be included in a brochure and distributed to local businesses, university campuses, eating establishments, churches, public buildings, and government agencies.

University of Southern Mississippi

EXECUTIVE SUMMARY

Introduction

The University of Southern Mississippi (Southern Miss) Hattiesburg Master Campus Facility Plan addresses the campus planning imperatives that challenge a University in the 21st century, such as cross-disciplinary research, student/faculty interaction, diversity of the student population, and sustainability. This transformative plan will reshape the University for the next ten to fifteen years and continue the Southern Miss tradition of a dynamic, student-centered campus. The focus of the plan is to enhance student life on campus while maintaining the University's commitment to academic excellence. In planning for the future, there are several requisites the plan addresses:

- Ensuring the physical campus setting continues to strengthen the quality of the collegiate experience.
- Reforming and reshaping residential life through creation of vibrant living/learning districts.
- Regenerating the historic core as the heart of campus.
- Promoting a strategy for growth that organizes development in accordance with existing campus districts.
- Maintaining a respectful, engaged relationship with the city of Hattiesburg.

For purposes of master planning, the Southern Miss Hattiesburg campus is described in five districts that are distinguished from one another by virtue of their functions, site character, and development history. In conjunction with the overall campus facilities, the plan contains guidelines for long-term development of the major districts that make up the campus. The district guidelines address factors such as land and building uses, building locations and massing, landscape strategies and typologies, and circulation.

Guidance and Consultation

The University of Southern Mississippi is committed to planning and developing the physical resources necessary to fulfill its mission. In Spring 2006, the Master Campus Facility Planning Committee (MCFPC) initiated a planning process to develop a master plan for the Hattiesburg campus. Membership on the MCFPC includes student, faculty, staff, alumni, and community representatives. The planning team consists of the MCFPC members along with the consulting collaborative of Eley and Associates, (Jackson, Mississippi); Victor Evans Architect-Facility Planner (Severna Park, Maryland); and Sasaki Associates (Watertown, Massachusetts). For a listing of all members of the planning team, see Appendix B, Acknowledgements. The process was guided by a commitment to research-based analysis, opportunities for participation, and transparency. The MCFPC was responsible for obtaining input from various constituencies regarding priorities for land use and promoting consistency in design and planning.

Organized around five work sessions on campus, the planning process was designed to be broadly consultative, seek initial input and then obtain feedback about ideas and concepts as they emerged. Work sessions occurred over 16 days of meetings which included 70 focus work sessions (see Work Session Objectives/Agenda, Appendix C). Participation and transparency were encouraged through individual meetings, focus groups, planning charrettes, campus and electronic forums, and community meetings.

Principles of the Study

The scope of the Master Campus Facility Plan has been deliberately directed to creation of a campus environment that will support the academic mission of the University. The following Planning Principles, developed in conjunction with the MCFPC, emphasize the quality of place necessary to:

- Protect historic open spaces and buildings
- Extend and enhance the character of the campus through the contextual design of future buildings and open spaces
- Create and promote environments for learning, research, and social engagement
- Promote sustainability, environmental design and energy conservation
- Develop an integrated circulation system
- Integrate modern technology
- Implement strategic growth practices.

Source: http://projects.sasaki.com/usm/Documents/USMReport_FINAL.pdf

Focus Groups and Interviews

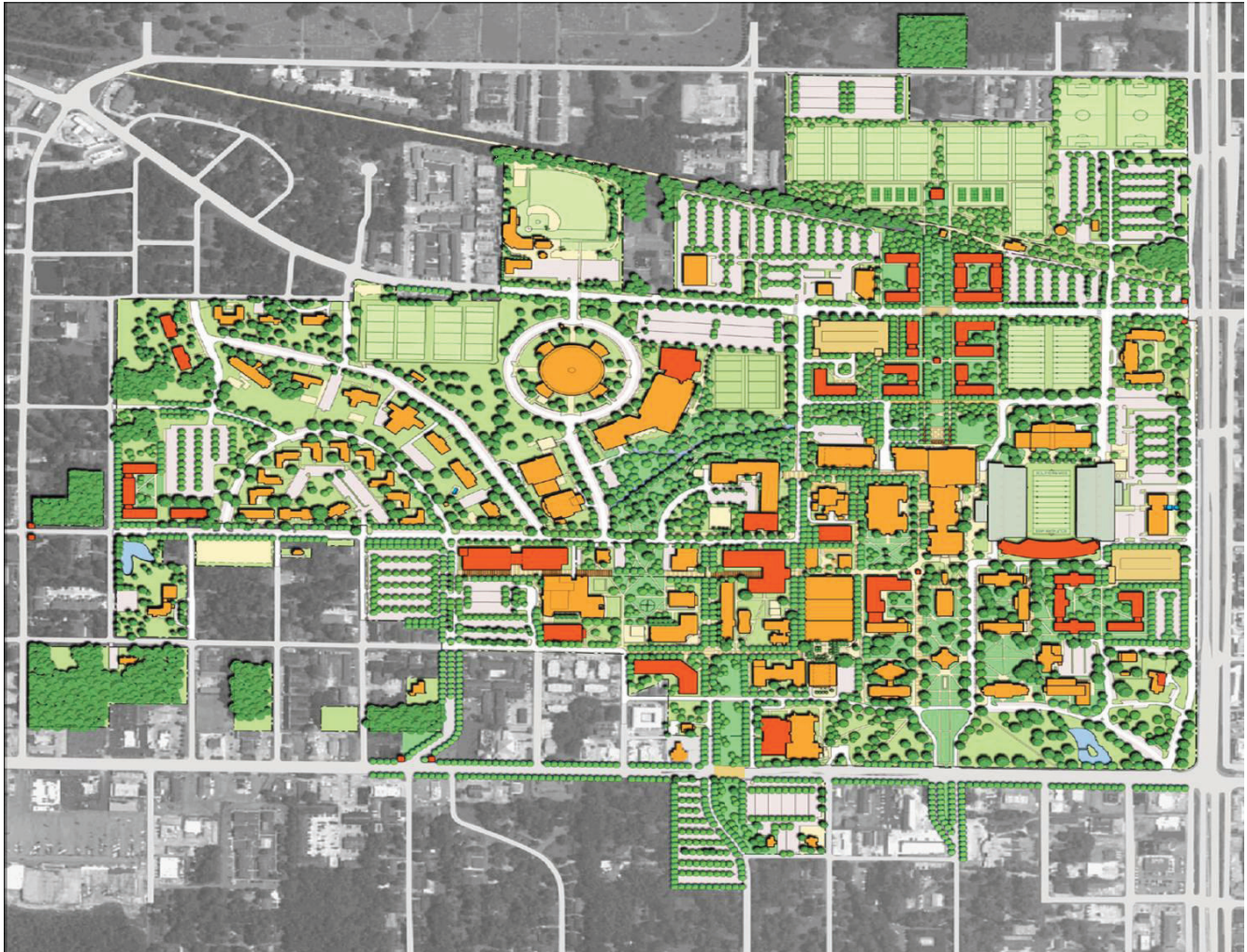
University of Southern Mississippi Master Plan Presentation

Placemaking North District

- Design Framework



University of Southern Mississippi Master Plan Presentation



Focus Groups and Interviews

William Carey University Interview with President R. Tommy King December 6, 2007

Planners met with President King December 6, 2007 to discuss Hattiesburg's comprehensive plan and any plans the university may have developed for its campus and the surrounding area. The university has identified the following issues that are important to the overall improvement of the campus environment and that will facilitate the university's plans for future growth:

1. There are no existing residential or commercial properties adjacent to the university designed to cater to students, such as a typical university "strip" containing eateries, bookstores, apartments and recreational opportunities. To enhance student life at the university, a zoning overlay district along Tuscan Avenue is desired to promote neighborhood mixed-use areas and design guidelines for new commercial and multi-family construction.
2. William Carey University lacks a connection to Downtown Hattiesburg and the Longleaf Trace—two areas of interest for university students. The city and the university should partner in addressing pedestrian and bicycle connections and in preparing any area-wide sidewalk and bikeway plans.
3. The university understands the importance of establishing partnerships within the community. William Carey University supports existing student-community partnerships and seeks to promote new ones, particularly with adjacent neighborhood associations and businesses.

Below is the university's "wish list" of programs and projects that would further enhance student life and the university environment:

1. Redevelop the old "Reliance building."
2. Promote new development of safe off-campus housing within walking distance of campus.
3. Continue to acquire dilapidated structures adjacent to campus.
4. Address crime and safety issues around campus.

William Carey University

Long Range Plan

William Carey University is currently involved in the strategic planning process to produce a strategic plan for the next ten year cycle. Although the entire strategic plan will not be completed for some months, the following long range plan is provided:

Academic Program

Plans are under way for the opening of a College of Osteopathic Medicine in the fall of 2010. A dean has been hired for the medical school and work is progressing on the accreditation application. It is anticipated that the first class of 100 medical students will arrive on the Hattiesburg campus in August of 2010. Administrators and faculty are being recruited and will begin arriving during the summer of 2008. A new masters degree in biological sciences will begin in the fall of 2009 as a feeder program for the medical school.

Reconfiguration and expansion of other programs will occur over the next five years. The journalism degree will emphasize broadcast and internet journalism, while retaining the traditional print emphasis. Movement to a greater number of online courses and programs will be evident. Increased offerings in the visual arts will be available. As the new coast campus is completed a wider range of day classes will be offered. Increased recruitment of international students will necessitate new programs that are more attractive to a global audience.

The university will conclude its ten-year accreditation review by the Southern Association of Colleges and Schools (SACS). This process requires an examination by the institution of its programs, resources and mission. This process should result in a strengthening of the academic program.

Facilities

Expanding programs and increased enrollment will require renovation and construction of facilities on the Hattiesburg campus. This will include:

- Completion of the addition to the Fail-Asbury Nursing Building
- Completion of an addition to the library and the Sarah Gillespie Gallery
- Resurfacing of two tennis courts and addition of three new tennis courts
- Construct a small lake to replace the one destroyed by Hurricane Katrina
- Renovation and construction of facilities for the College of Osteopathic Medicine
- Construct a new theater building
- Construct a new boulevard entrance into the campus from County Drive

Focus Groups and Interviews

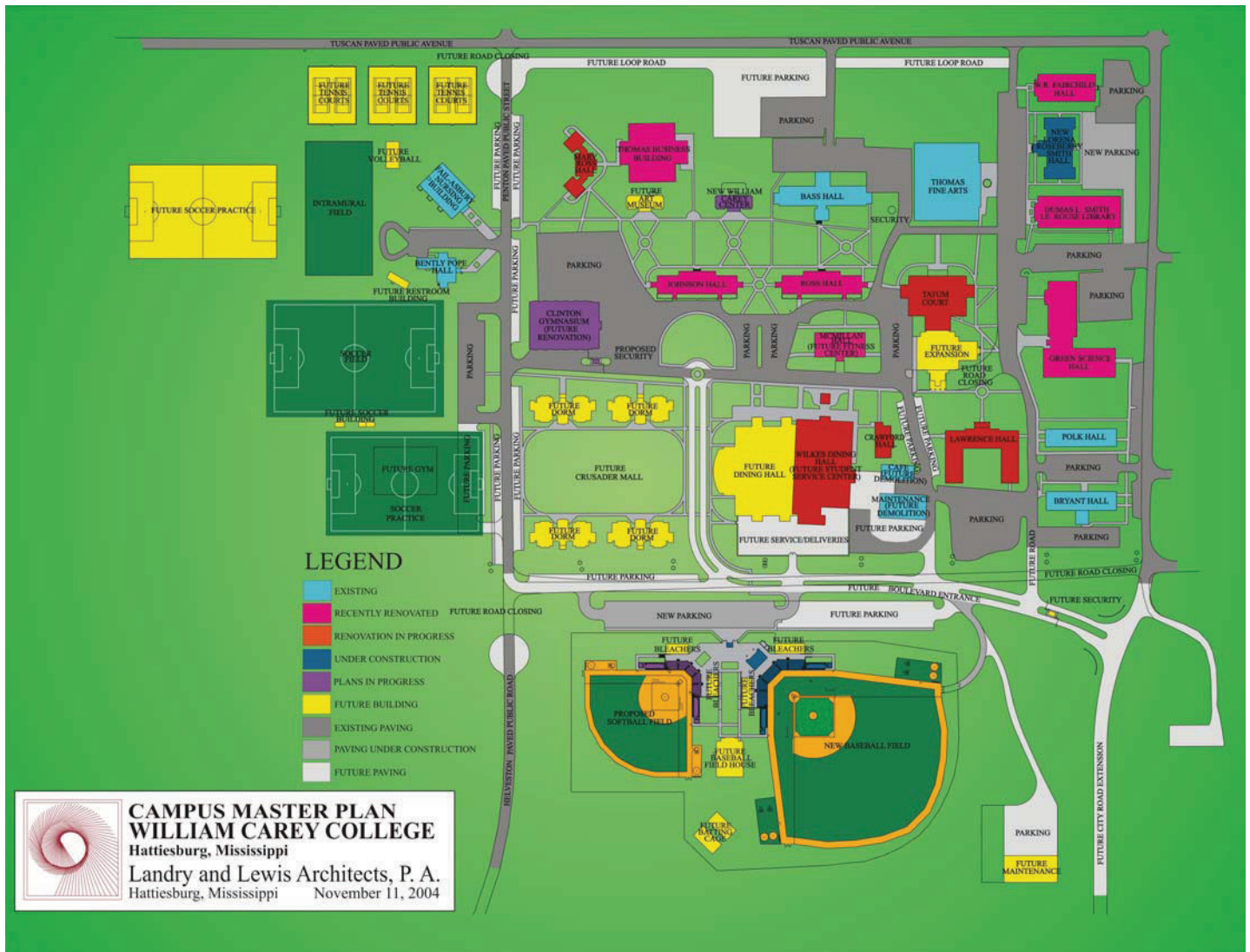
William Carey University

- Relocate the facilities maintenance shop
- Construct a chapel
- Construct a new garden as a part of the “Pine Belt in Bloom” emphasis

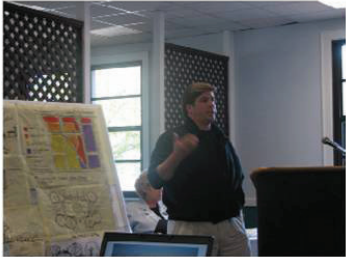
Community

William Carey University is vitally interested in collaborating with other agencies, community organizations, and the City of Hattiesburg to preserve and improve the community surrounding the campus. To this end the university will seek to accomplish the following:

- Continue to acquire property surrounding the campus to create green space and improved community facilities
- Seek to obtain an arts grant to renovate the two-story brick building at the corner of Tuscan and Cherry streets into an arts workshop and apartments for young artists
- Seek to attract “niche” businesses that will serve the campus and the surrounding neighborhood
- Encourage the construction of a “park-like” boulevard from downtown to the campus, with bike trails, hiking trails and public transportation
- Continue the “Hubserve” program which involves WCU students in

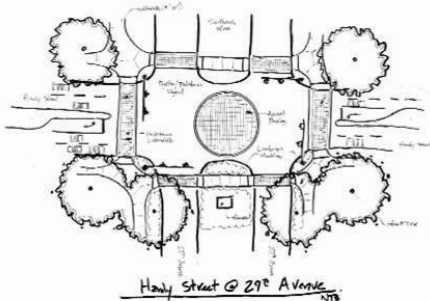


Focus Groups and Interviews



Make not little plans: they have no magic to stir men's blood and probably themselves will not be realized. Make big plans: aim high in hope and work, remembering that a noble, logical diagram once recorded will never die, but long after we are gone will a living thing, asserting itself with ever-growing insistency.

Daniel Burnham, architect
(1846-1912)



**American Planning Association
Mississippi Chapter**

2006 Charrette Exercise Report



2006 Charrette Exercise Report

Table of Contents

Background

Process

Common Elements

Comprehensive Plan Recommendations

Appendix A Study Area Summary

Appendix B Charrette Participants

Appendix C Charrette Agenda

Appendix D Group Drawings

Appendix E Renderings

Focus Groups and Interviews

2006 Charrette Exercise Report



Background

Each year the American Planning Association sponsors National Community Planning Month in October to raise the visibility of the planning profession. The Mississippi Chapter of the American Planning Association (MAPA) State Conference was held in Hattiesburg on October 26-27, 2006. MAPA sponsored a design charrette on the 25th as a pre-conference event to build a localized community-based vision for a mixed use area in Hattiesburg. The purpose of the charrette was to define a comprehensive vision for the area's design and quality of life.

Process

Participants were invited to the charrette two weeks prior by a letter from Mary Merck, AICP, MAPA President. The Conference Committee included Pattie Brantley, AICP, Kara W. Drane, AICP, John Lewis, AICP and Corey Proctor. These individuals along with Richard Conville, Hattiesburg Planning Commissioner, compiled data on the existing conditions of the area. The study area included Hardy Street and the University of Southern Mississippi to the north, Forrest General Hospital to the south, and S. 27th Avenue and S. 31st Avenues to the east and the west, respectively. The data compiled included land use, building condition, zoning, photographs, building footprints and aerial maps.

The meeting, held at the Cochran Center at the University of Southern Mississippi, lasted from noon until 4:30. Lunch was provided and approximately thirty people participated which included property owners, developers, neighborhood residents, university, medical, and government representatives. Planners and landscape architects from across the state also participated. The meeting began with a welcome by Mary Merck, AICP and with Mayor Johnny Dupree presenting a proclamation for National Community Planning Month. Pattie Brantley, AICP, gave an overview on the project area and existing conditions. Bob Barber, AICP, gave a presentation on the sustainable development resources and methods/charrette Guidelines. Mr. Barber also served as the Charrette Facilitator.

Participants separated into three groups with planners and landscape architects involved with each team to develop a design for the study area. The landscape architects that participated in the process were Russ Bryan, ASLA, Michael Gammill, ASLA, RLA, Sally Hughes, ASLA and Tom Schurch, ASLA, RLA. After the charrette exercise, the groups presented the district plans.

Two days later, at the conclusion of the MAPA Conference, the charrette findings were presented by each group. Rendering of the proposed area were presented by Russ Bryan, ASLA and Michael Gammill, ASLA. Chris Duerkson, a conference presenter, led a discussion on alternatives for implementing the "good quality ideas" that were generated from the charrette. Mr. Duerkson is a land use attorney and the managing director of Clarion Associates in Denver, Colorado. Mr. Duerkson is an expert in growth management and zoning, natural resource protection, and historic preservation. His discussions centered around design standards that include landscaping and sidewalks, public incentives such as tree planting and underground utilities, parking commonality, and vertical mixed use developments.

2006 Charrette Exercise Report



Common Elements

Each group developed a unique plan and a district name for the study area. The three district plans are included in Appendix D, Group Drawings. The ideas that generated from the groups are as follows:

The Dome District

- Control traffic flow first using natural boundaries
- Greenspace/Creek Greenspace Area
- Anchors Forrest General Hospital, Hattiesburg Clinic, University, Hardy Street Commercial
- Low density in southwest corner
- Incentive district – collaborative efforts of parcels
- Think community
- Buildings along Hardy Street – use residential on top
- Medical uses with residential uses upper stories
- Sidewalks and lighting
- Tax incentives to draw developers

Hardy Creek

- Business improvement district with incentives
- 29th Avenue grand entry way
- Existing single-family residential with new rental cottages
- Townhouses
- Restaurants, entertainment
- Enhanced drainage
- Walk/bike trail along creek
- Parking structures with architectural value
- Focal element at south end of 29th and Arlington
- Encourage multi-family above retail
- Walk/bike/car
- Mother-in-law structures – university sporting events

Uptown District

- Buffers
- Creek enhancement
- Pedestrian walkways
- Rehabilitate existing older structures
- Parking out of site
- Commercial to match neighborhood character
- Arched entry way at USM main entrance
- Facade treatment to businesses along front on Hardy
- Walkway through the project area
- Row houses with rear alleys on 31st
- Stand along condos near existing single-family residential

Focus Groups and Interviews

2006 Charrette Exercise Report



Although the groups designed the district in slightly different layouts, each group identified the common elements that would add value for this mixed use area:

- Sidewalks/pedestrian corridors
- Mixed vertical uses
- Street tree planting/landscaping
- Lighting
- Multi-use path – walking, biking
- District identity through design standards
- Creek/greenway enhancement/sustainability
- Gateways/entrances/signage
- Underground utilities
- Vehicular parking that supports district needs

Comprehensive Plan Recommendations

Listed below are goals and strategies that are recommended for inclusion in the City of Hattiesburg Comprehensive Plan regarding this unique area:

- To provide and encourage development and redevelopment that contains a compatible mix of residential and nonresidential uses within close proximity to each other, rather than separating uses.
- To enhance the business economy by strengthening and protecting the image, identity, and unique character of the university, medical and neighborhood areas.
- To promote buildings that compliment surrounding developments and streets in an effort to create a cohesive visual identity.
- To create a unique streetscape with trees, sidewalks, attractive buildings, underground utilities, lighting and signage/gateway markers.
- To construct an efficient pedestrian and bike network that connects the university, hospital, residential and non-residential uses.
- To ensure vehicular parking supports pedestrian environment and is not a barrier for circulation.
- To promote and market workforce housing.
- To enhance natural features and sustainability.



Neighborhood Survey, page 1



Neighborhood Survey 2008-2028 Comprehensive Plan

Name of Neighborhood Association: _____

Today's Date: _____

1. How long have you lived in your neighborhood?

- ☐ A. < 5 years ☐ B. 5-10 years
☐ C. 11-15 years ☐ D. More than 15 years

2. How would you grade your neighborhood as a place to live?

- ☐ A. Excellent ☐ B. Good
☐ C. Fair ☐ D. Poor

3. When you think about your neighborhood, what are you most proud of?

4. What keeps you from getting services you need in your neighborhood?

5. If you could change anything about your neighborhood, what would it be?

6. What most attracted you to this neighborhood?

- ☐ A. People ☐ B. Schools
☐ C. Convenience to work ☐ D. Safety
☐ E. Availability of housing ☐ F. Price of housing
☐ G. Other: _____

7. Do you believe that these issues about *business development* are causing a problem in your neighborhood? Check all that apply.

- ☐ A. Chain businesses displacing local businesses?
☐ B. Business intrusion into residential neighborhoods?
☐ C. Businesses taking up green/park space?
☐ D. Lack of retail/service businesses in the area?

8. Do you believe that any of these *social issues* are a problem in your neighborhood? Check all that apply.

- ☐ A. Overcrowding
☐ B. Voter Participation
☐ C. Access for disabled
☐ D. Gambling
☐ E. Loitering
☐ F. Alcohol/drug abuse
☐ G. Depression/suicide
☐ H. Prostitution
☐ I. Gangs
☐ J. Teen pregnancy
☐ K. Truancy
☐ L. Racial/ethnic tension
☐ M. Illiteracy
☐ N. Youth causing trouble while expelled/suspended from school
☐ O. Abuse (spouse, children, elderly, parents)

Continued on back of page →

Neighborhood Survey, page 2

Page 2

Hattiesburg Neighborhood Survey



2008-2028 Comprehensive Plan

9. Do you believe that any of these *public safety issues* are a problem in your neighborhood? Check all that apply.

- ☐ A. Crimes against property
- ☐ B. Crimes against persons
- ☐ C. Personal safety
- ☐ D. Visibility of police patrols
- ☐ E. Visibility of community police (NET)

10. How satisfied are you with the condition of streets and roads in your neighborhood?

- ☐ A. Very satisfied ☐ B. Satisfied
- ☐ C. Not satisfied ☐ D. Very unsatisfied

11. How satisfied are you with the landscaping and maintenance of public spaces in Hattiesburg, including parks, street trees and public lands along roads and highways?

- ☐ A. Very satisfied ☐ B. Satisfied
- ☐ C. Not satisfied ☐ D. Very unsatisfied

12. Which issues do you feel need attention or improvement in your neighborhood?

- ☐ A. Flooding ☐ B. Curb and drains
- ☐ C. Noise pollution ☐ D. Air pollution
- ☐ E. Water pollution ☐ F. Trash/litter
- ☐ G. Graffiti ☐ H. Lighting
- ☐ I. Street repairs/potholes
- ☐ J. Sidewalk condition
- ☐ K. Abandoned buildings and lots
- ☐ L. Amount of open/green/park space
- ☐ M. Amount of trees/wooded areas
- ☐ N. Access to a neighborhood meeting space
- ☐ O. Zoning issues
- ☐ P. Other: _____

13. Do you have any other ideas, issues or concerns that were not addressed in this survey?

14. Were you aware that Hattiesburg is working on a comprehensive plan to guide growth, development and city policies for the next 20 years? If so, how did you find out about it?

- ☐ Was not aware
- ☐ WDAM
- ☐ Hattiesburg American
- ☐ Kick-off Flyer
- ☐ Neighbor/Friend
- ☐ Other

15. How would you like to be involved in this plan for Hattiesburg? How would you like to express your ideas and opinions?

- ☐ Attend workshop or open house-style meetings
- ☐ Attend public hearings
- ☐ Complete survey forms
- ☐ Attend neighborhood meetings or gatherings
- ☐ E-mail comments
- ☐ Other

Thank you for taking the time to complete this survey.

Newsletter #1



All Aboard!

Getting On Track for Hattiesburg's Future

Hattiesburg's Comprehensive Plan Newsletter

City Kicks-Off Comprehensive Planning Process

Hattiesburg city officials are kicking-off the city's comprehensive plan and public involvement is needed. To celebrate the beginning of this process, a community-wide open house event will be held Friday, June 1, from 3 p.m. to 6:30 p.m., and Saturday, June 2, from 9 a.m. to 1 p.m. at the W.U. Sigler Center, 315 Conti Street.

According to Mayor Johnny DuPree, Ph.D., the event will be an opportunity for all citizens to provide ideas and opinions on the future of Hattiesburg, and on what Hattiesburg should be like 15 to 20 years from now.

"This plan will be the vision for the citizens of Hattiesburg," DuPree said. "The policies in this plan will set

Hattiesburg's course for the next 20 years. We want to hear from the people of Hattiesburg because this is their plan and it will be citizen-driven."

Refreshments will be provided. Also, crayons and coloring book activities will be available for children.

What is a comprehensive plan?

A comprehensive plan, also called a master plan or community plan, is a basic plan prepared to guide the development of a community.

A comprehensive plan covers an entire community and includes an analysis of all of the components that make up the community—people, housing, public buildings, public services, transportation,



Photo: The newly renovated Hattiesburg Depot, Downtown Hattiesburg, Mississippi

infrastructure, police and fire protection, and quality of life.

Though the plans cover a 20-year time period, updates should be made every 5 to 7 years, as events in a community can modify the course of a plan, or require that new information be considered.

Vision Advisory Team Appointed

A fourteen-member committee, named the Vision Advisory Team, has been appointed by Mayor DuPree, the Hattiesburg City Council and the Hattiesburg Planning Commission to guide the comprehensive planning program.

The Vision Advisory Team's introductory meeting was held March 22, 2007 at the Jackie Dole Sherrill Community Center.

The Team's primary task is to develop a set of vision statements, which are the plan's broad policy statements, and to make recommendations on the

goals, objectives, policies, and projects that will be contained in the plan.

The members will obtain information on community needs by consulting with Hattiesburg's neighborhood associations, focus groups, a Technical Advisory Team comprised of city, county and agency representatives, and city residents.

Updates of Vision Advisory Team activities will appear in this quarterly newsletter and on the City's website, www.hattiesburgms.com. For more information,

please contact Virginia Lisovicz at (601) 554-1019, or send an e-mail to all.aboard@neel-schaffer.com.

Vision Advisory Team

Mary Ann Barnes
Fred Burns
Richard Conville
John Delgado
Kenneth Fairley
Perry Knight
Bert Kuyrkendall
Linda McMurtrey
Wanda Naylor
Jim O'Dair
Johnnie Ruth Owens
Betsy Rowell
Micah Scott
Addie Stover



Volume 1, Issue 1

April 12, 2007

City of Hattiesburg
City Officials

Mayor
Johnny L. DuPree, Ph.D.

City Council

Kim Bradley, Ward 1, President
Deborah Denard Delgado, Ward 2
Carter Carroll, Ward 3
David Ware, Ward 4
Henry Naylor, Ward 5

Chief Administrative Officer
Beverly Magee Commodore

Director of Administration
Eddie Myers

Director of Urban Development
Willie Horton

City Attorney
Charles Lawrence, Esq.

Hattiesburg Planning Commission

Leighton Lewis, Chairman
Micah Scott, Vice-Chairman
Marjorie Chambers
Richard Conville
Isaiah Easterling
Pamela Pridgen
Irene Williams Jones
Johnny McArthur
David Sheley
John Tanks
Larry Winborne

Dates to Remember:

- June 1-2—Open House at the W.U. Sigler Center
- Watch this corner in future newsletters for more information on upcoming events.

May 2007						
Su	Mo	Tu	W	Th	Fri	Sat
		1	2	3	4	5
6	7	8	9	10	11	12
13	14	15	16	17	18	19
20	21	22	23	24	25	26
27	28	29	30	31		

June 2007						
Su	Mo	Tu	W	Th	Fri	Sat
					1	2
3	4	5	6	7	8	9
10	11	12	13	14	15	16
17	18	19	20	21	22	23
24	25	26	27	28	29	30

Newsletter #2



All Aboard!

Getting On Track for Hattiesburg's Future

Hattiesburg's Comprehensive Plan Newsletter

Hattiesburg Residents Want Sidewalks, Code Enforcement

Hattiesburg residents attended the June 1 and 2 kick-off event to begin the city's comprehensive planning process. "This is a chance for residents to let us know their ideas and concerns as we begin this planning process," said Mayor Johnny DuPree, Ph.D. "We wanted to start the process by hearing from Hattiesburg's citizens."

Upon entering, residents were given a post-it-note pad and pen and asked to write down their opinions on a number of different community issues, including neighborhoods, housing, streets, sidewalks, bikeways, community facilities, land use and education.

More than 400 comments were received. Residents who commented wanted

code enforcement, new sidewalks and bicycle paths, better street maintenance, more shopping opportunities downtown and east of Highway 49, cultural heritage events, drainage improvements, and recycling programs.

The Vision Advisory Team—Hattiesburg's comprehensive plan steering committee—will use these comments, future public input and technical data to develop the vision statements, goals, objectives, and programs that will be included in the comprehensive plan.

If you were unable to attend the kick-off and would like a chance to submit comments, the poster displays will be moving to various locations in Hattiesburg in the coming months, beginning with the

Council of Neighborhoods meeting, August 9 at 5:30 p.m. in the Cultural Center.



Photo: Comprehensive Plan Kick-Off at the Sigler Center

Post-It Note Comments

"Make Gordon's Creek a feature not a littered ditch."

"Put [utility] lines underground! Go solar! Go green!"

"More street lights."

"Need to keep our students in school—at least through high school. Include more arts in curriculum."

"Adopt ... 'complete streets' policy so that all new streets and street renovations accommodate the needs of all users, including cyclists and pedestrians"

official plan website at www.hattiesburgms.com, or send an e-mail to all.aboard@neel-schaffer.com.

Neighborhood Surveys Available, Workshop Planned

Hattiesburg is fortunate to have a network of neighborhood associations to inform citizens of civic issues and empower residents to take action. An important component of the comprehensive planning process will be gathering input of neighborhood associations and members. The first opportunity to comment on neighborhood issues will be at Night Out Against Crime events. Neighborhood surveys will be available at the Night Out kick-off, July 31st, and at the Night Out Against Crime block parties located

throughout Hattiesburg, August 7, 2007. Planners are seeking to update information from the 1999 neighborhood planning effort—Neighborhoods Building Hattiesburg's Future. September 20, 2007, a neighborhood workshop will be held at the Jackie Dole Sherrill Community Center. In addition to identifying important neighborhood issues, attendees will have an opportunity to take part in preparing future land use plans and corridor plans for each neighborhood. For more information on upcoming activities, visit the



Volume 1, Issue 2

July 20, 2007

City of Hattiesburg
City Officials

Mayor
Johnny L. DuPree, Ph.D.

City Council
Kim Bradley, Ward 1, President
Deborah Denard Delgado, Ward 2
Carter Carroll, Ward 3
David Ware, Ward 4
Henry Naylor, Ward 5

Chief Administrative Officer
Beverly Magee Commodore

Director of Administration
Eddie Myers

Director of Urban Development
Willie Horton

City Attorney
Charles Lawrence, Esq.

Hattiesburg Planning Commission

Leighton Lewis, Chairman
Micah Scott, Vice-Chairman
Marjorie Chambers
Richard Conville
Isaiah Easterling
Pamela Pridgen
Irene Williams Jones
Johnny McArthur
David Sheley
John Tanks
Larry Winborne

Dates to Remember:

- July 31, August 7—Night Out Against Crime events
- August 9—Council of Neighborhoods meeting
- September 20—Neighborhood workshop

August 2007						
Su	Mo	Tu	W	Th	Fri	Sat
28	30	31	1	2	3	4
5	6	7	8	9	10	11
12	13	14	15	16	17	18
19	20	21	22	23	24	25
26	27	28	29	30	31	
September 2007						
Su	Mo	Tu	W	Th	Fri	Sat
						1
2	3	4	5	6	7	8
9	10	11	12	13	14	15
16	17	18	19	20	21	22
23	24	25	26	27	28	29
30						

Newsletter #3



All Aboard!

Getting On Track for Hattiesburg's Future

Hattiesburg's Comprehensive Plan Newsletter

Work on Comprehensive Plan Continues

The last meeting of the Vision Advisory Team was held on November 29, 2007. Since then, additional information has been gathered through workshops and personal interviews.

Below is a list of this year's activities:

January

- 7th-** Business Survey circulated through the Area Development Partnership and City websites.
- 17th-** Second Neighborhood Workshop held to gather additional surveys, write Vision Statements, and identify and map future infrastructure needs.
- 26th-** Attended Mobile-Bouie Neighborhood Association meeting for Environmental

update.

- 29th-** Developer's Workshop provided developers, design professionals and the public an opportunity to learn about new development trends and to fill out a Developer's Survey.

February

- 7th-** Follow-up Interview: Ivory Williams, Director, Urban Development
- 15th-** Interview: Dr. Martha Saunders, President, USM
- 25th-** Interview: Dr. Angie Godwin, President, ADP
- 29th-** Follow-up Interview: Bennie Sellers, Director, Public Works



Photo: Vision Advisory Team Meeting— September 27, 2007



Photo: Downtown Walking Tour for Vision Advisory Team— October 27, 2007



Photo: Neighborhood Workshop— January 17, 2008.



Photo: Developers' Workshop— January 29, 2008.

Visit the official plan website at www.hattiesburgms.com, or contact La'Keylah White at 601-545-4591

Future Activities, Public Meeting Dates Set

As work on the 2008-2028 Comprehensive Plan continues, the following meeting and appointment dates have been set:

March

- 7th-** Distribute draft Chapters 1-4 to the Vision Advisory Team
- 17th-** Meet with Mayor DuPree to present preliminary draft.

- 1st-** Preliminary draft available to the public at certain locations and the City's website.

- 24th-** Citywide public forum to receive comments.

May

- 14th-** Planning Commission Special-Called Public Hearing on draft plan.

NEEL-SCHAFER
Solutions you can build upon
e-mail: all.aboard@neel-schaffer.com

Volume 1, Issue 3

April, 2008

City of Hattiesburg
City Officials

Mayor

Johnny L. DuPree, Ph.D.

City Council

Kim Bradley, Ward 1, President
Deborah Denard Delgado, Ward 2
Carter Carroll, Ward 3
David Ware, Ward 4, Vice-President
Henry Naylor, Ward 5

Chief Administrative Officer

Director of Administration
Eddie Myers

Director of Urban Development
Ivory Williams

City Attorney

Charles Lawrence, Esq.

Hattiesburg Planning
Commission

Micah Scott, Chairman
Richard Conville, Vice-Chairman
Linda McMurtrey, Secretary
Marjorie Chambers
Isaiah Easterling
Irene Williams Jones
Joe White
Johnny McArthur
John Tanks
Larry Winborne

Dates to Remember:

- **April 1**—Preliminary Draft available to Public.
- **April 24**—Citywide Public Forum at Hattiesburg Cultural Center, Downtown. 5:30—8 pm
- **May 14**—Special-Called Planning Commission Hearing at Jackie Dole Sherrill CC. 1 pm

April 2008

Su	Mo	Tu	We	Th	Fri	Sat
		1	2	3	4	5
6	7	8	9	10	11	12
13	14	15	16	17	18	19
20	21	22	23	24	25	26
27	28	29	30			

May 2008

Su	Mo	Tu	We	Th	Fri	Sat
			1	2	3	
4	5	6	7	8	9	10
11	12	13	14	15	16	17
18	19	20	21	22	23	24
25	26	27	28	29	30	31

