



# PROJECT NOLA: FAQ

## WHAT IS PROJECT NOLA?

Project NOLA is a real-time camera program that provides a community-based approach to crime abatement that enables individual citizens, businesses, neighborhood associations, churches and local units of government to work together to make their community a safer place to live, work and visit. It is powered by **those who choose to host a street-facing Project NOLA HD Crime Camera** on residential, business or community property.

This program is proven to help significantly reduce crime, increase quality of life and stimulate local economies – recent stories/case studies have been presented for both Natchez PD and Biloxi PD who are using the program.

## WHO PURCHASES/INSTALLS THE CAMERAS?

These cameras are purchased and installed by citizens, businesses, associations, churches and communities that choose to place a camera outside of their facility - pointing toward the street.

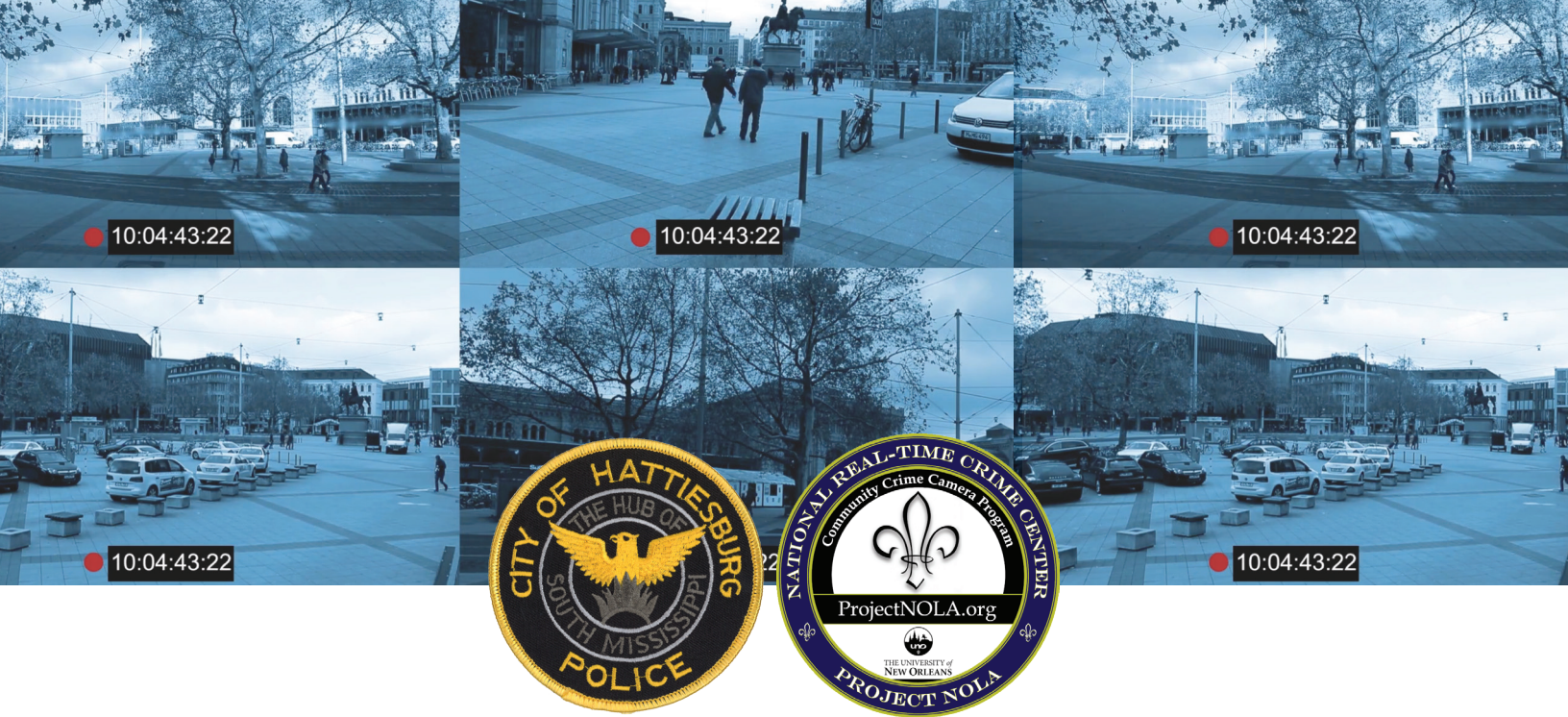
## WHAT DOES IT COST?

Project NOLA only costs a fraction of traditional crime camera programs while providing greater results, reliability and protection of people's privacy.

- This program can be deployed by communities with public dollars through a subsidized program that includes the cost of the camera, installation and a service agreement.
- Privately (residents, businesses, associations, churches, etc.), the program's cost will vary depending on the camera/quantity purchased. Part of the fee is tax-deductible.

## WHERE DOES THE FOOTAGE GO?

- Project NOLA Cloud records & professionally monitors crime cameras across the U.S.
- Providing time-sensitive information to units responding to emergency situations .
- Data will be transmitted from the crime camera, to computer storage servers located at the Project NOLA Real Time Crime Center ("cloud-based storage"), and stored for 10 days. The same data will transmit to the participating community where it will be available for real time monitoring and historical investigations, archiving or securing as evidence.



# PROJECT NOLA: FAQ

## WHY IS IT GOOD FOR OUR COMMUNITY?

When crimes occur, criminals are more likely to be apprehended more quickly, sign confessions, implicate others involved and plead guilty - saving municipalities millions in overtime pay, local incarceration and court-related costs.

## WHY NOW?

This technology has existed for several years now (re: home surveillance via retail markets). You now see more active residents with these systems alerting their neighbors and providing video footage to local authorities. Project NOLA further expands this concept and provides businesses, associations, churches and more to have that same approach to helping local authorities solve crimes through a more robust camera/software system.

Policing methods continue to evolve, and we need to take a proactive approach as we continue make Hattiesburg a safer place to live, work and visit.

## WILL THE CITY USE THE PROJECT NOLA CAMERAS TO ISSUE TRAFFIC CITATIONS?

No. Mississippi law (Miss. Code Ann. § 17-25-19) prohibits the use of cameras to enforce compliance with traffic signals, speed limits or any other traffic law or regulation.

## WILL MY HOME BE UNDER SURVEILLANCE?

Project NOLA's cameras will be directed at the street only.

## HOW CAN THESE CAMERAS KEEP HATTIESBURG SAFER?

In moderation, surveillance – with specific parameters of being pointed at public streets – can go a long way in helping to reduce crime. This program has data that tells that story in multiple locations (including New Orleans, Natchez and Biloxi).

---

## TO LEARN MORE:

**PROJECT NOLA CONTACT:**  
**BRYAN LAGARDE, EXECUTIVE DIRECTOR**  
TELEPHONE: (504) 736-9187  
EMAIL: [PROJECTNOLA@GMAIL.COM](mailto:PROJECTNOLA@GMAIL.COM)  
[WWW.PROJECTNOLA.ORG](http://WWW.PROJECTNOLA.ORG)

**HPD'S PROJECT NOLA CONTACT:**  
**RYAN MOORE, PIO**  
TELEPHONE: (601) 467-7556  
EMAIL: [RMOORE@HATTIESBURGMS.COM](mailto:RMOORE@HATTIESBURGMS.COM)  
[HATTIESBURGMS.COM/HPD](http://HATTIESBURGMS.COM/HPD)