

For Planning Purposes Only.



COMPREHENSIVE PLAN 2008-2028

City Boundary/ General Street Map

Legend

— Streets

□ City Limits

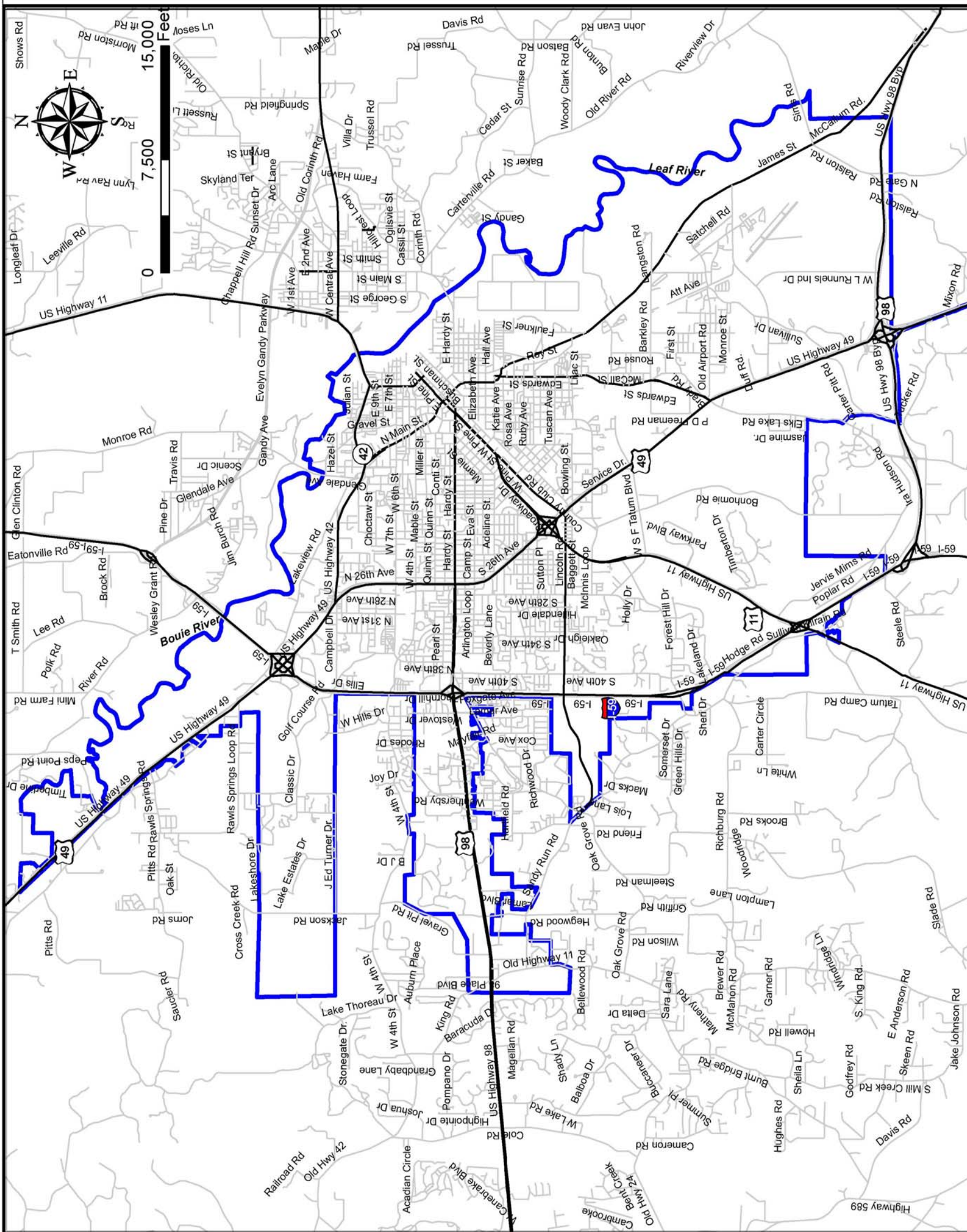
Map Data Source:

City of Hattiesburg
Department of Urban Development
Geographic Information Systems

Date: April 1, 2008



Post Office Box 1487
Hattiesburg, MS 39403-1487
601.545.1565



For Planning Purposes Only.



COMPREHENSIVE PLAN 2008-2028

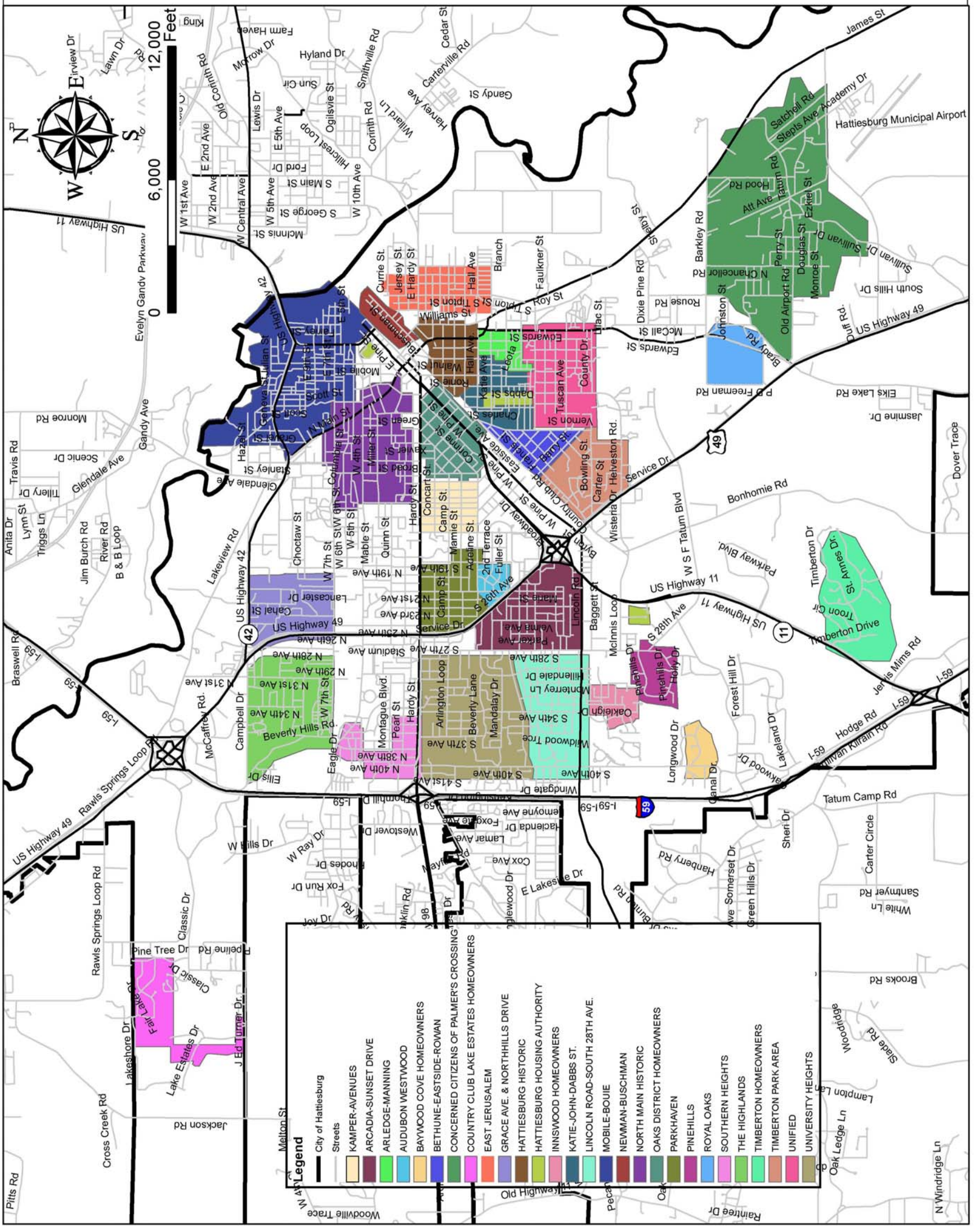
Neighborhood Associations

Map Data Source:
City of Hattiesburg
Department of Urban Development
Geographic Information Systems

Date: April 1, 2008



Post Office Box 1487
Hattiesburg, MS 39403-1487
601.545.1565



For Planning Purposes Only.



COMPREHENSIVE PLAN 2008-2028

Local Historic Conservation Districts

Legend

- Streets
- Hattiesburg Historic Neighborhood
- Newman-Buschman Railroad Historic District
- North Main Historic District
- Oaks Historic District

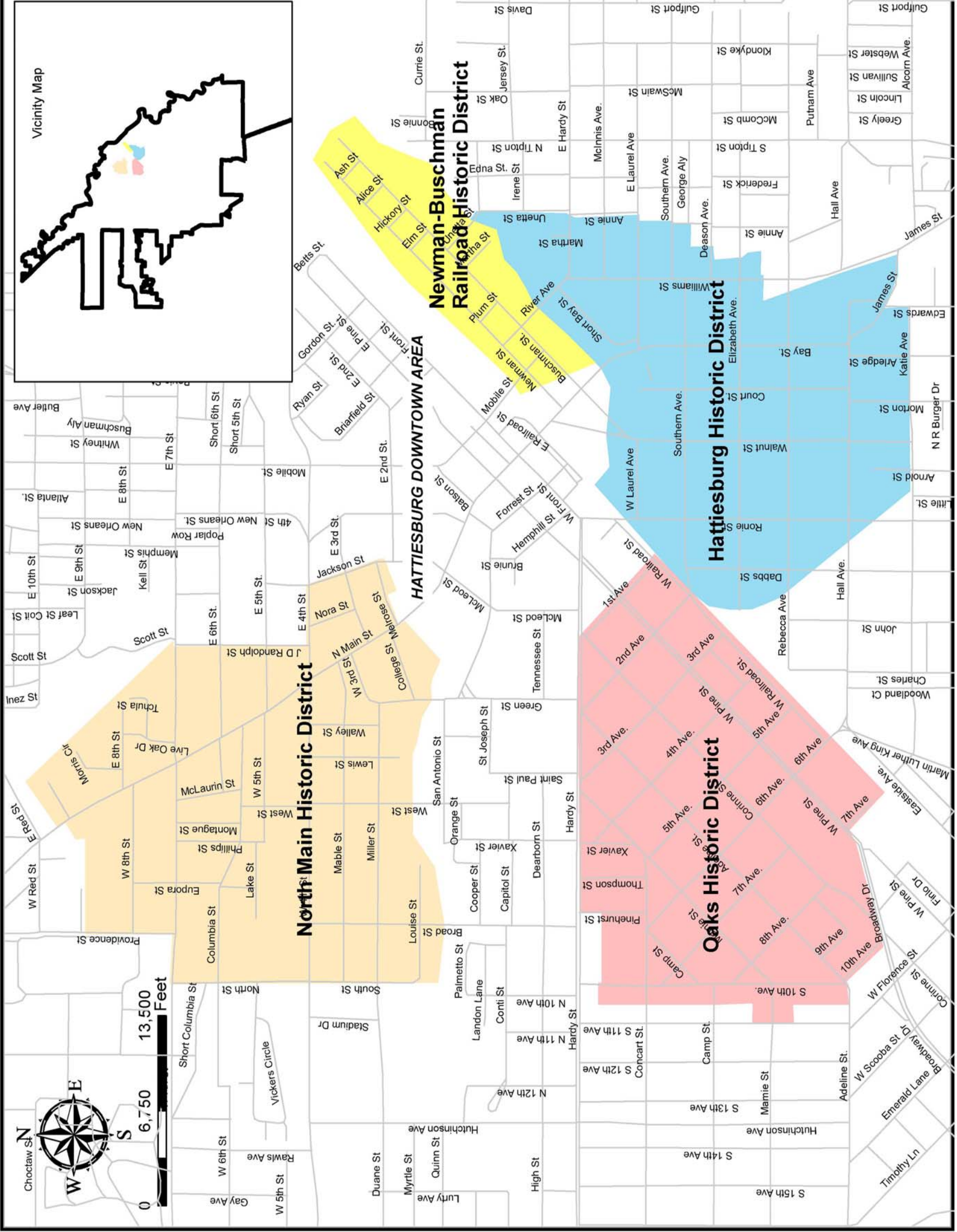
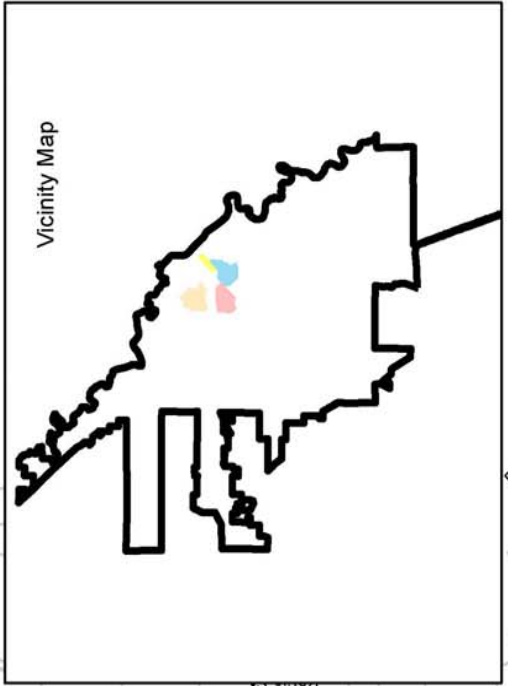
Map Data Source:

City of Hattiesburg
Department of Urban Development
Geographic Information Systems

Date: April 1, 2008



Post Office Box 1487
Hattiesburg, MS 39403-1487
601.545.1565



For Planning Purposes Only.



COMPREHENSIVE PLAN 2008-2028

Floodplain and Waterways

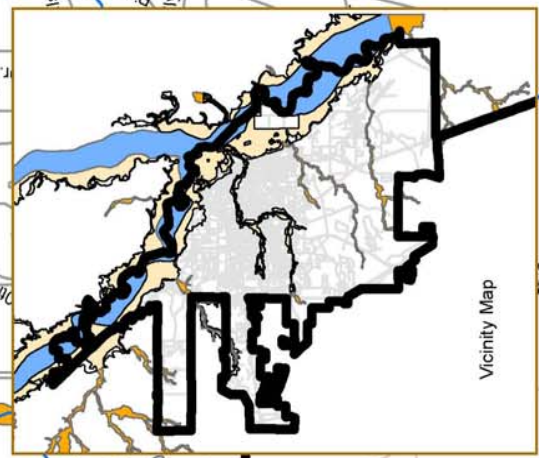
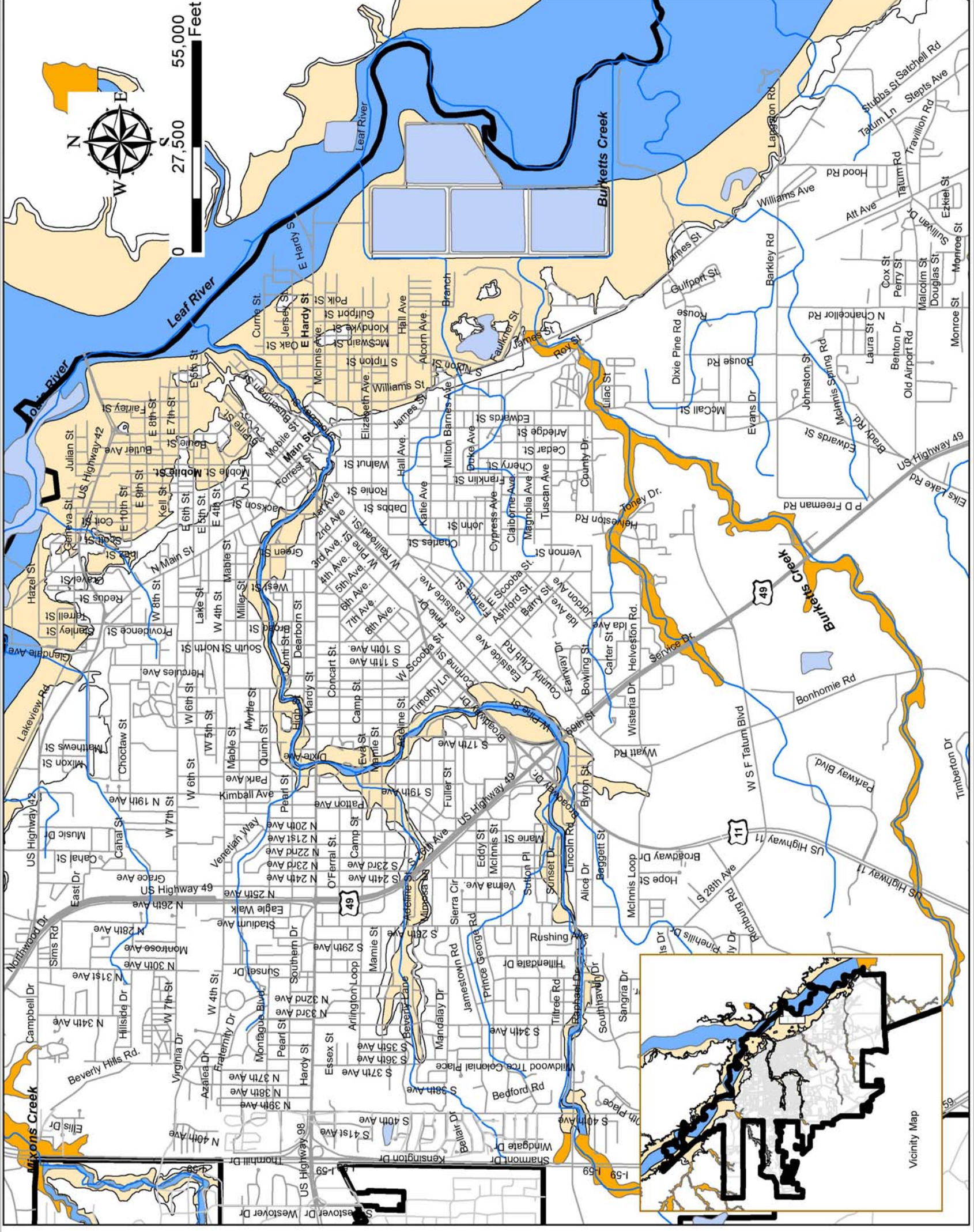
- Legend**
- Streets
 - Water
 - Streets
 - City Limits
- Flood Zones**
- FLOODWAY
 - ZONE A
 - ZONE AE
 - ZONE X

Map Data Source:
 City of Hattiesburg
 Department of Urban Development
 Geographic Information Systems

Date: April 1, 2008



Post Office Box 1487
 Hattiesburg, MS 39403-1487
 601.545.1565








For Planning Purposes Only.



COMPREHENSIVE PLAN 2008-2028

Sites of Environmental Concern

Legend

-  Former Davis Timber Site
-  Former Forrest Co. Co-op and Meridian Fertilizer
-  Former Gulf States Cresote Site
-  James Street Landfill
-  MS Central Railroad

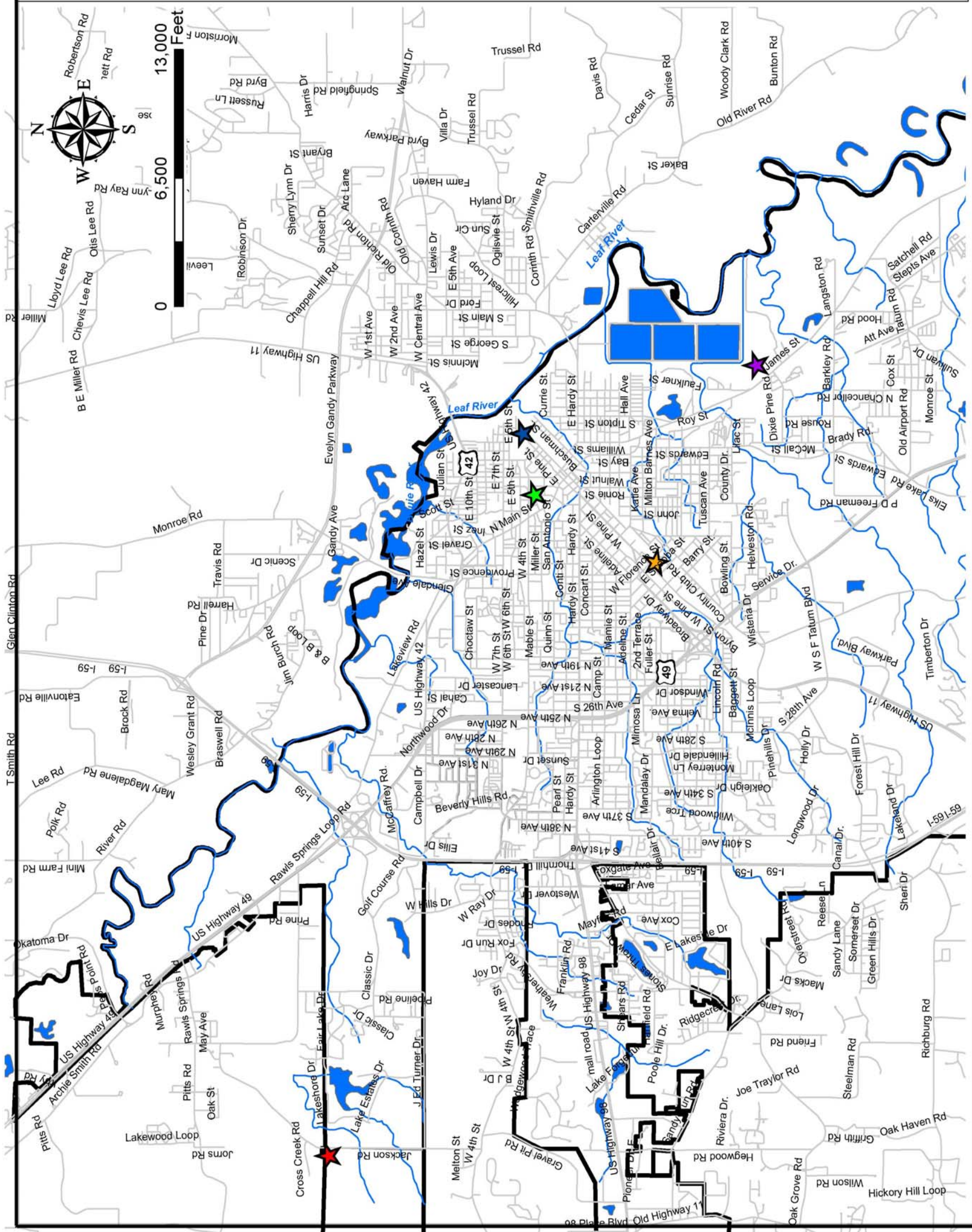
Map Data Source:

City of Hattiesburg
Department of Urban Development
Geographic Information Systems

Date: April 1, 2008



Post Office Box 1487
Hattiesburg, MS 39403-1487
601.545.1565



For Planning Purposes Only.



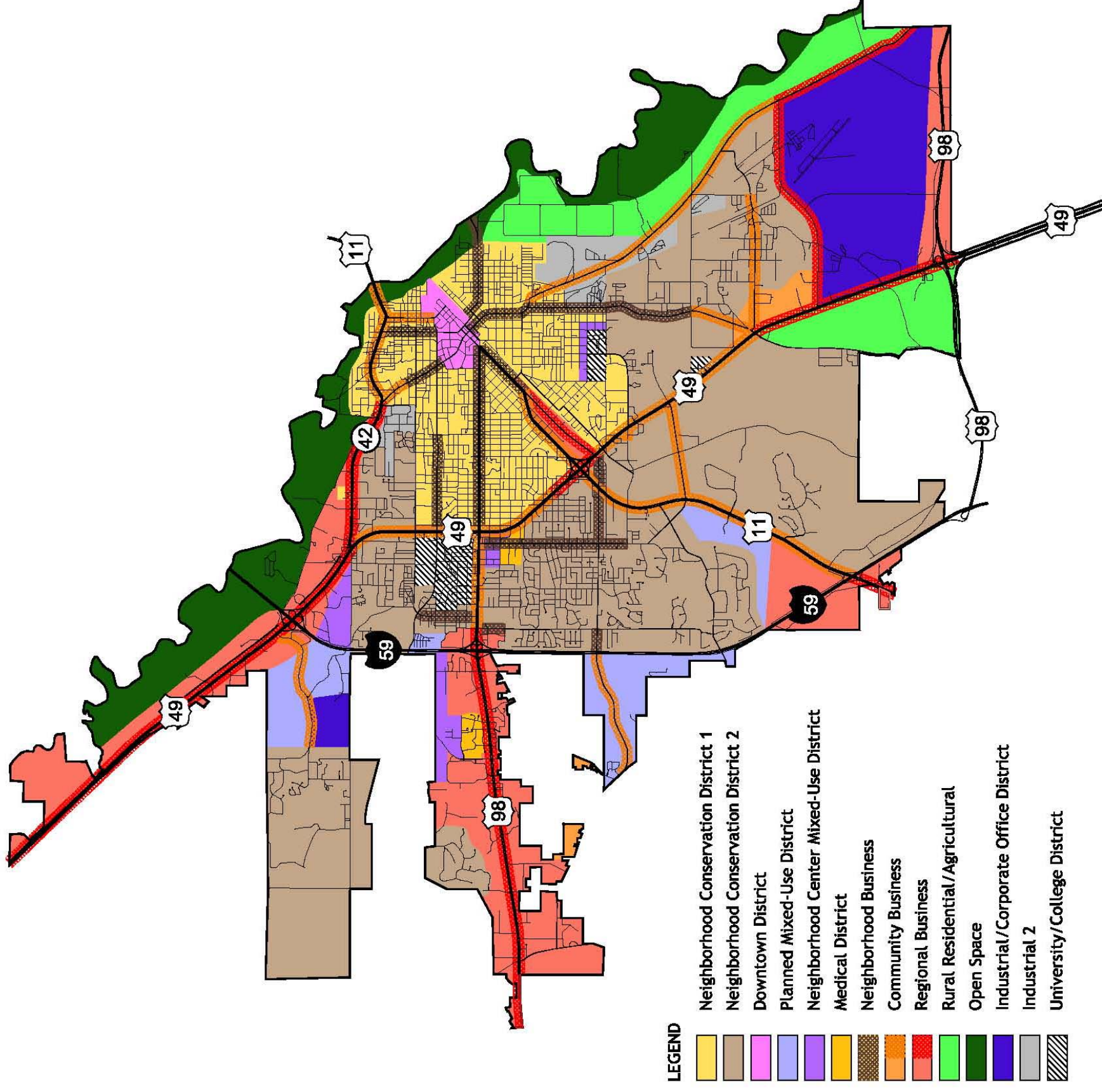
COMPREHENSIVE PLAN 2008-2028

Future Land Use

Date: April 1, 2008
Revised: October 8, 2008
Revised: December 16, 2008



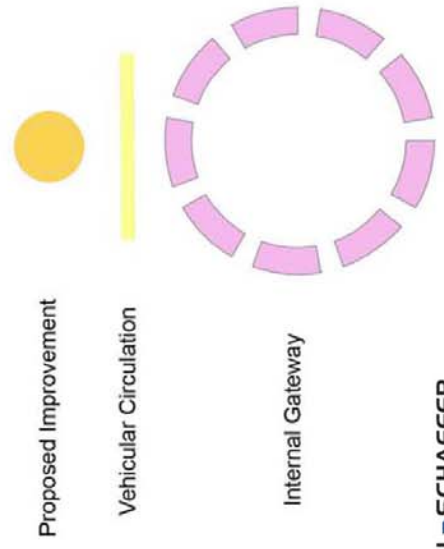
Post Office Box 1487
Hattiesburg, MS 39403-1487
601.545.1565



Broadway Drive Corridor

Template for Proposed Corridor Studies

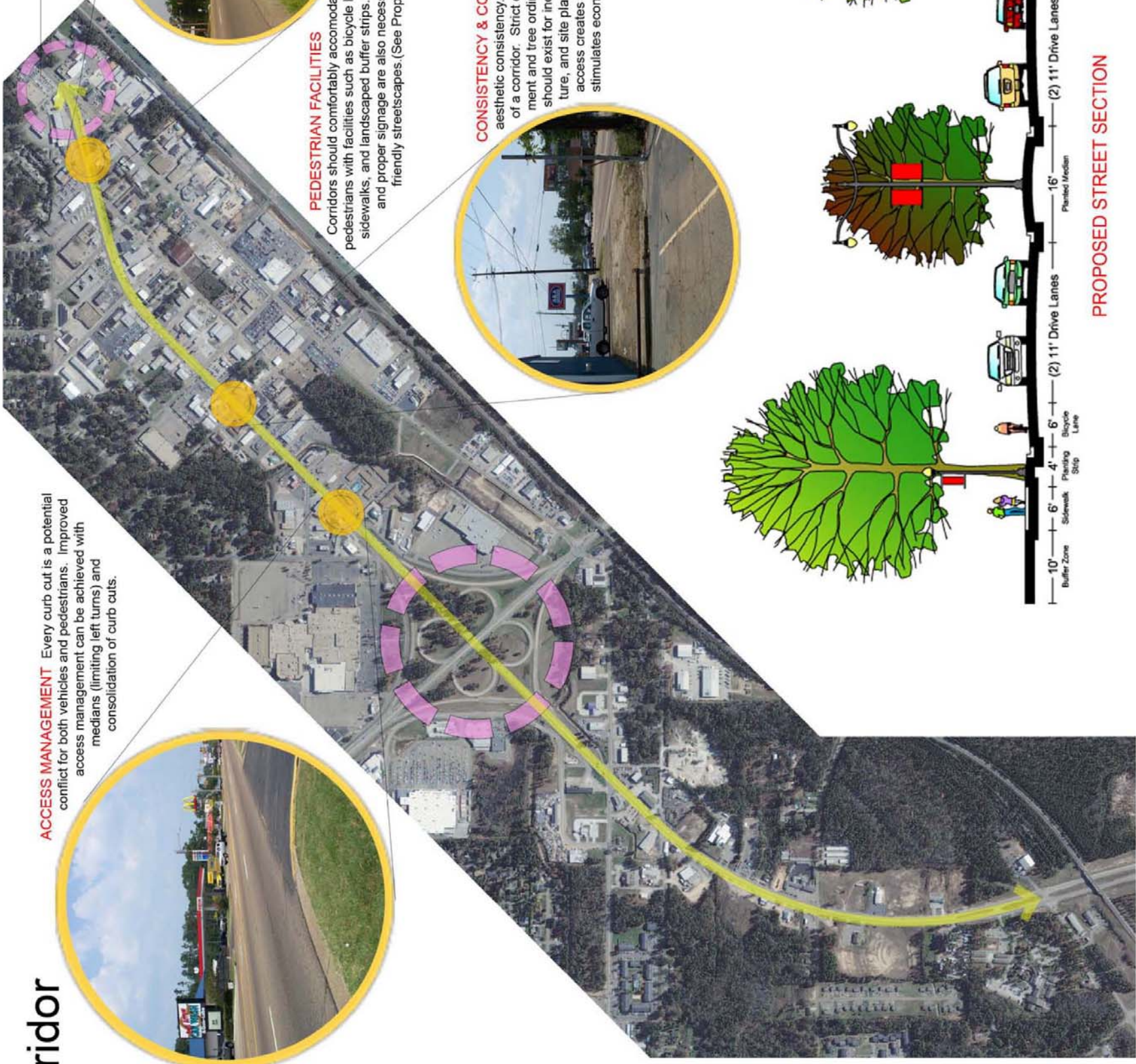
The Comprehensive Plan supports the need for individual commercial corridor studies. The study should consider existing land use, future land use, design guidelines, pedestrian ways, landscaping/trees, signage and corridor ingress/egress improvements.



ACCESS MANAGEMENT Every curb cut is a potential conflict for both vehicles and pedestrians. Improved access management can be achieved with medians (limiting left turns) and consolidation of curb cuts.



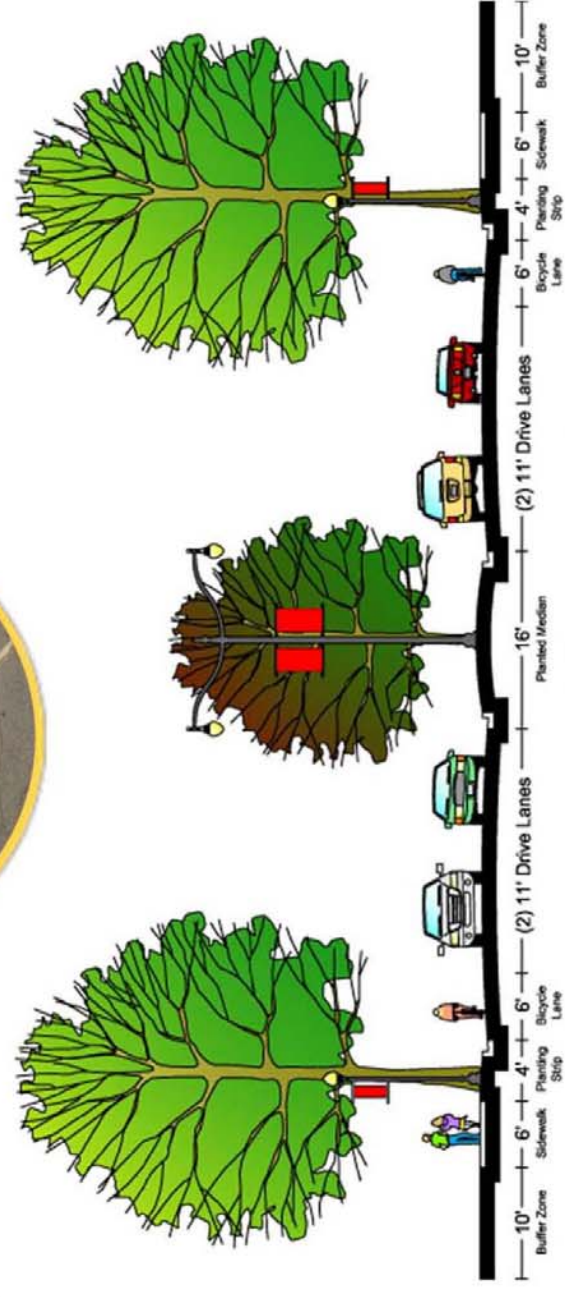
Downtown Gateway



PEDESTRIAN FACILITIES

Corridors should comfortably accommodate pedestrians with facilities such as bicycle lanes, crosswalks, transit shelters, sidewalks, and landscaped buffer strips. Street trees, attractive lighting, and proper signage are also necessary to create pedestrian friendly streetscapes. (See Proposed Street Section).

CONSISTENCY & CONSOLIDATION Corridors should offer aesthetic consistency. A landscape ordinance is vital to the aesthetics of a corridor. Strict enforcement of the existing buffer zone requirement and tree ordinance is also vital. In addition, design guidelines should exist for individual corridors to govern signage, architecture, and site planning. Consolidation of utilities, signage, and access creates a more pleasing image of the community and stimulates economic growth.



For Planning Purposes Only.



COMPREHENSIVE PLAN 2008-2028

Downtown Facade Improvement Boundaries

Legend

- Streets
- ▭ Downtown Boundary

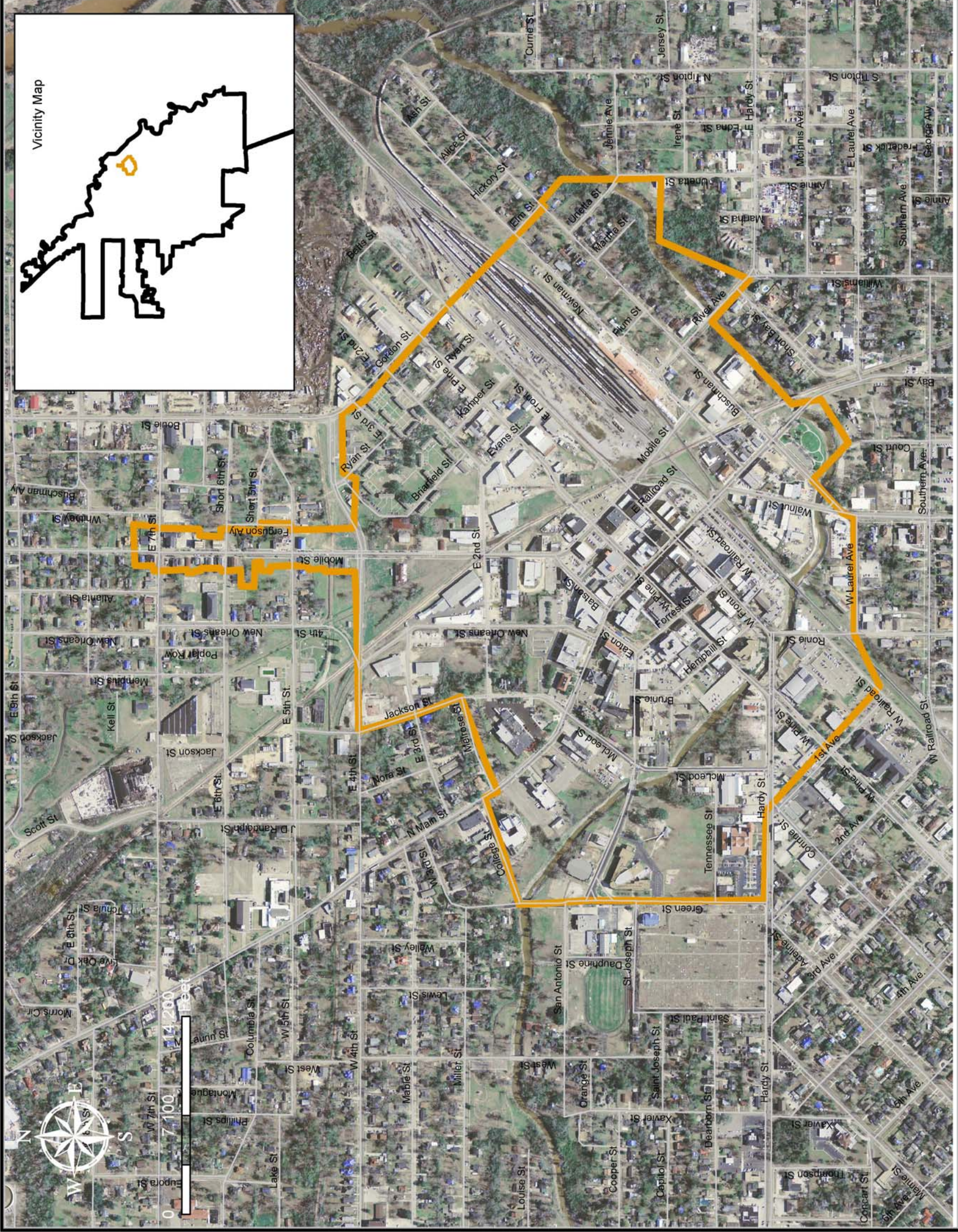
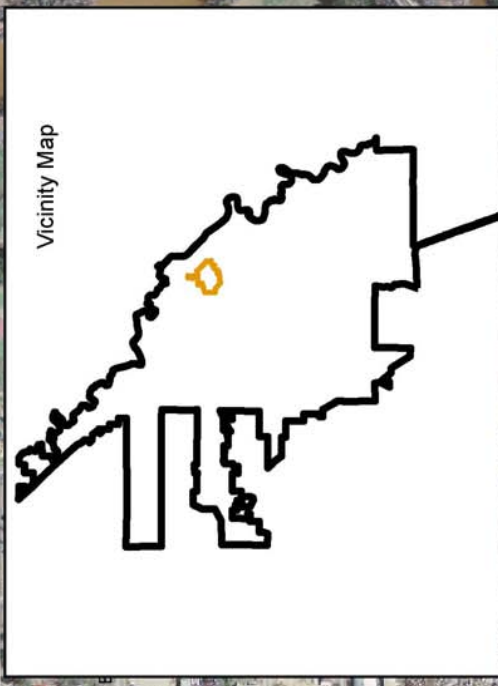
Map Data Source:
City of Hattiesburg
Department of Urban Development
Geographic Information Systems

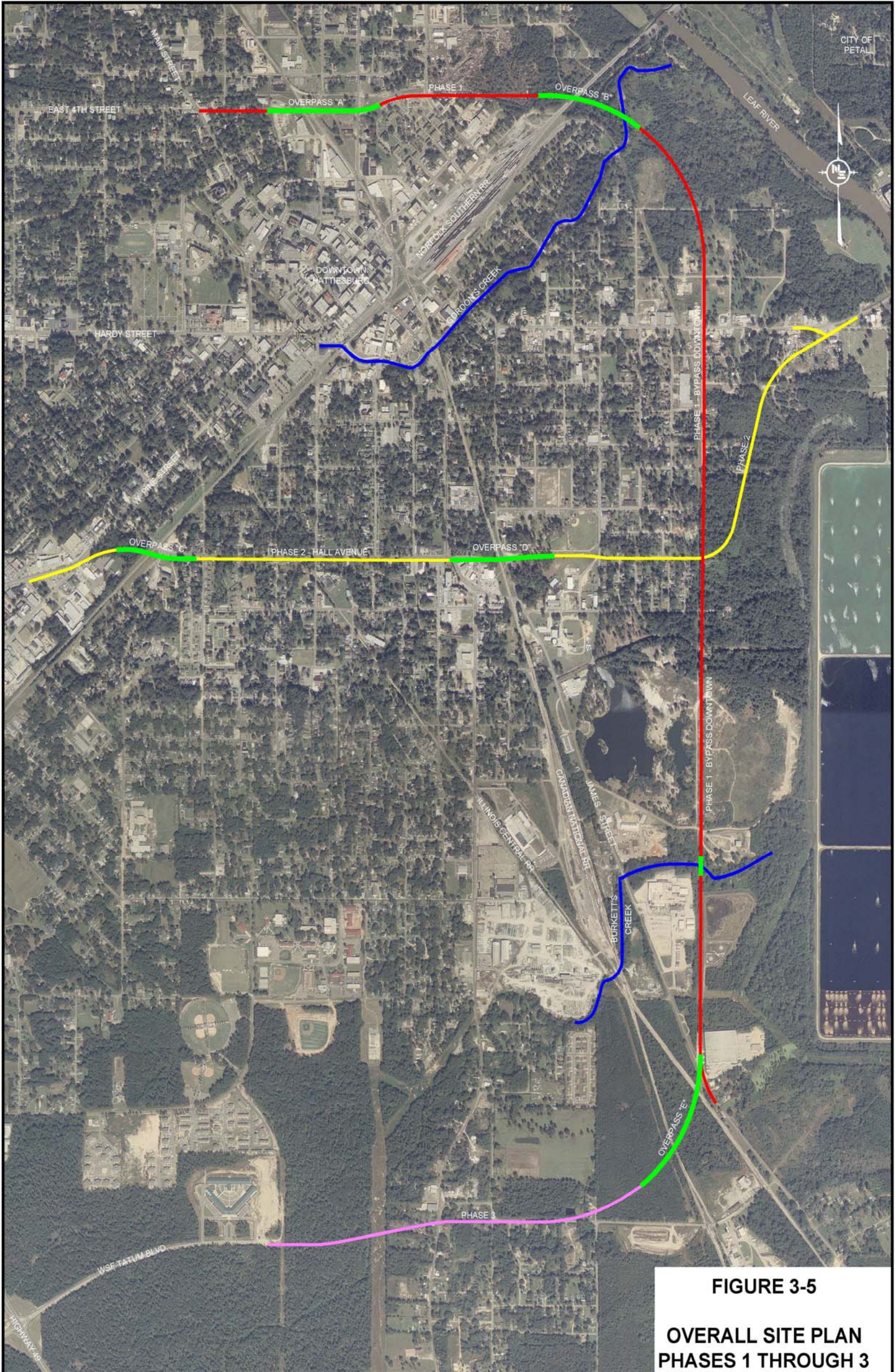
Date: April 1, 2008



Post Office Box 1487
Hattiesburg, MS 39403-1487
601.545.1565

Vicinity Map



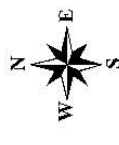
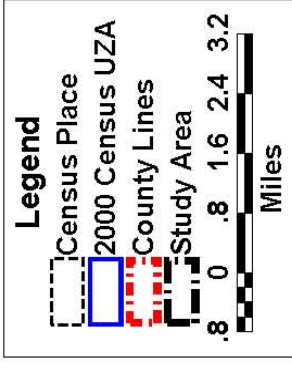


HATTIESBURG AREA - PHASED ROADWAY IMPROVEMENTS

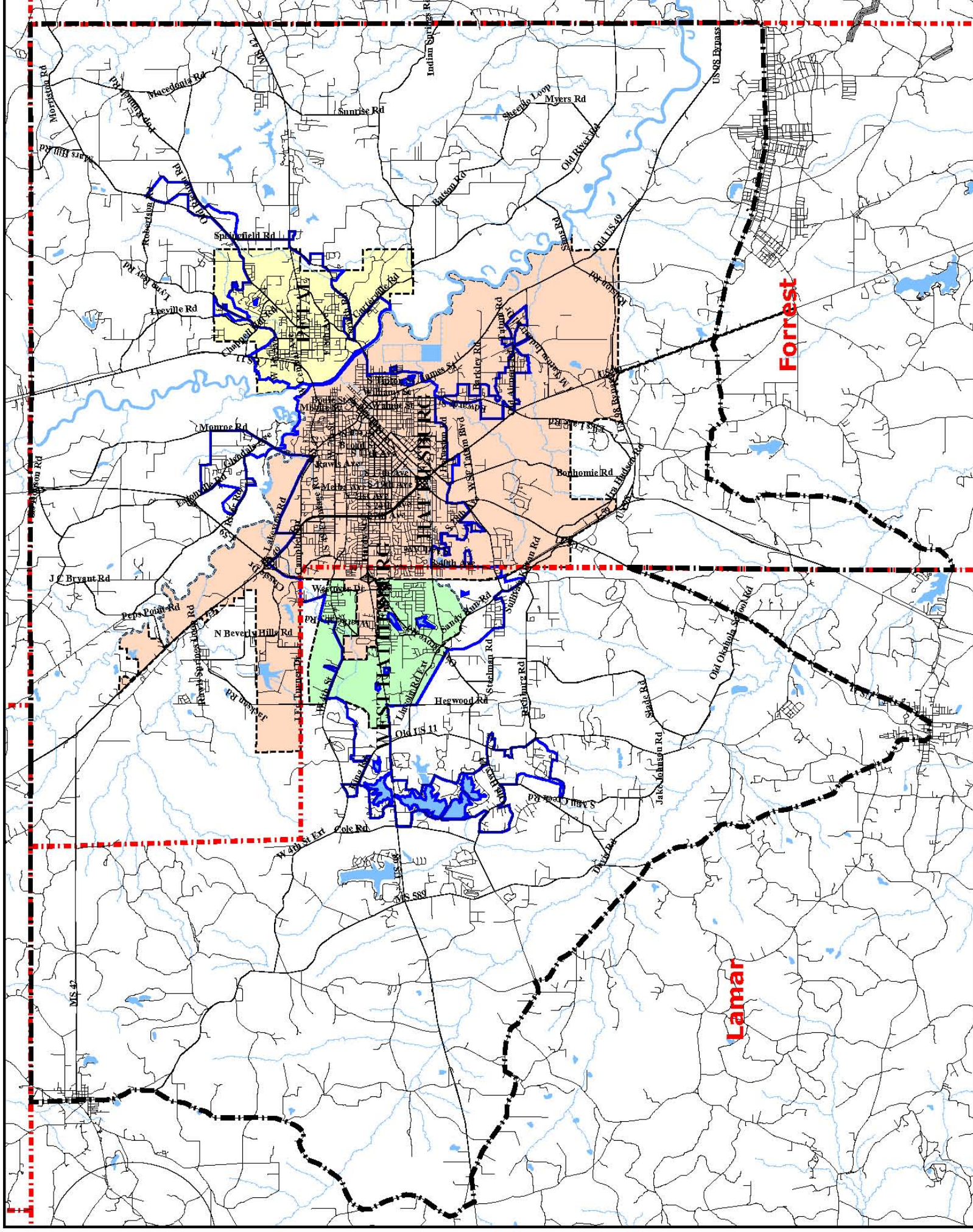
2030

Hattiesburg Urbanized Area Transportation Plan

Figure 1-2
Hattiesburg Study Area



Source: HPFL MPO
U. S. Census



**2030
Hattiesburg Urbanized Area
Transportation Plan**

*Figure 2-1
Functional
Classification*

Legend

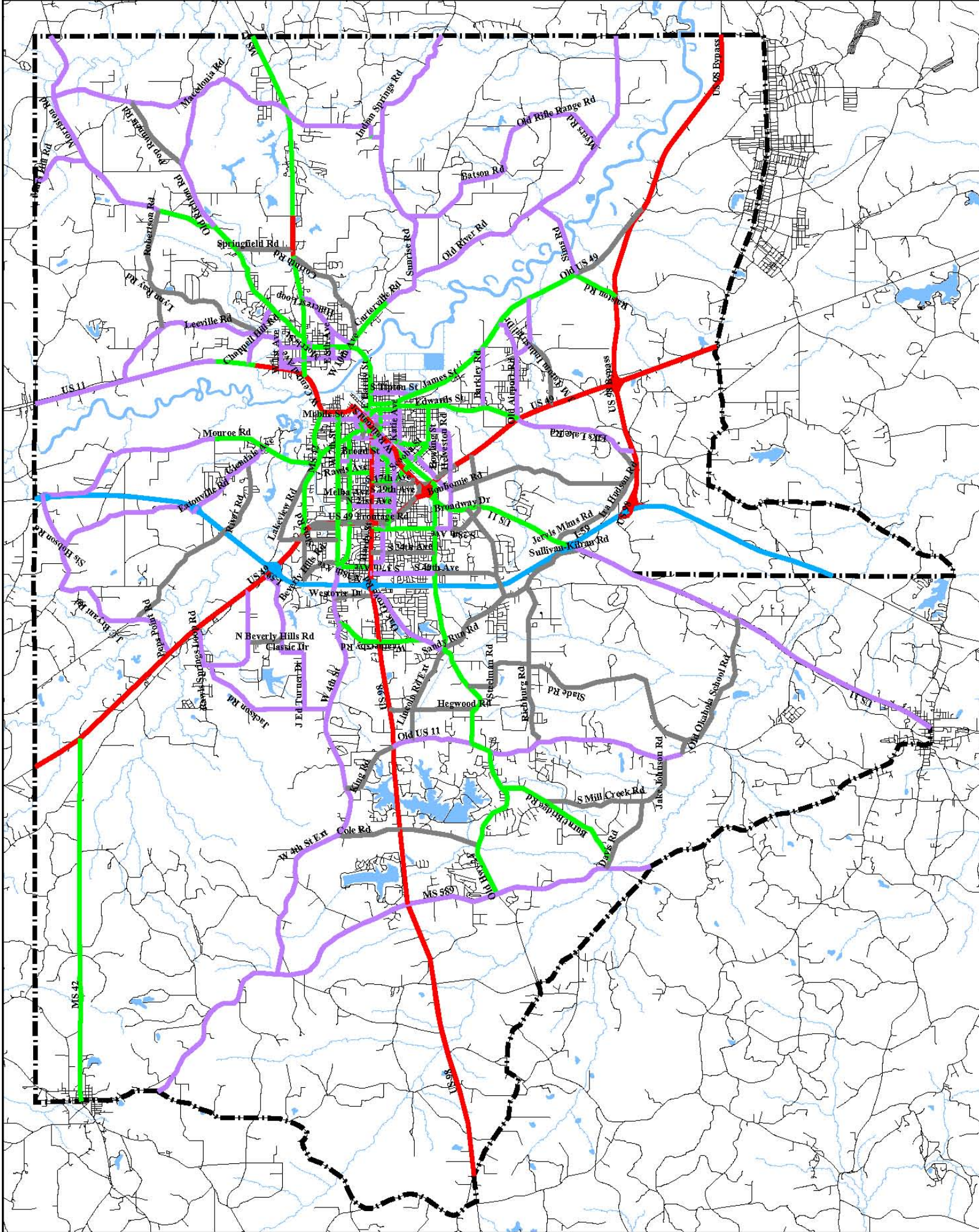
Study Area

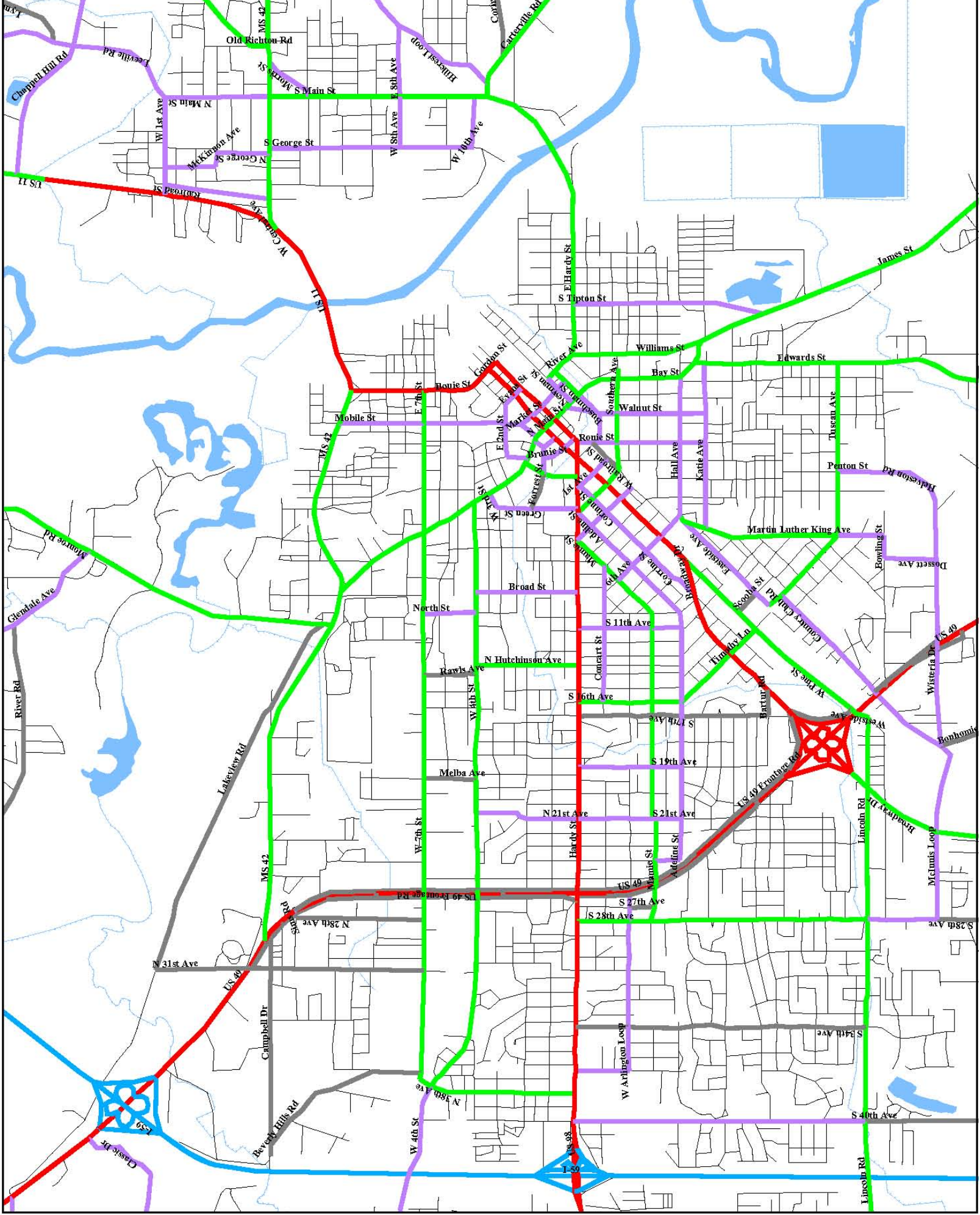
Functional Class

- Interstate
- Principal Arterial
- Minor Arterial
- Collector
- Unclassified

.8 0 .8 1.6 2.4 3.2
Miles

Source: MDOT





**2030
Hattiesburg Urbanized Area
Transportation Plan**

*Figure 2-2
Functional
Classification*

Legend

Study Area

Functional Class

- Interstate
- Principal Arterial
- Minor Arterial
- Collector
- Unclassified

.2 0 .2 .4 .6 .8
Miles

N W E S

Source: MDOT



**2030
Hattiesburg Urbanized Area
Transportation Plan**

*Figure 7-3
Stage I Projects
2007 - 2011*

Legend

ITS Projects

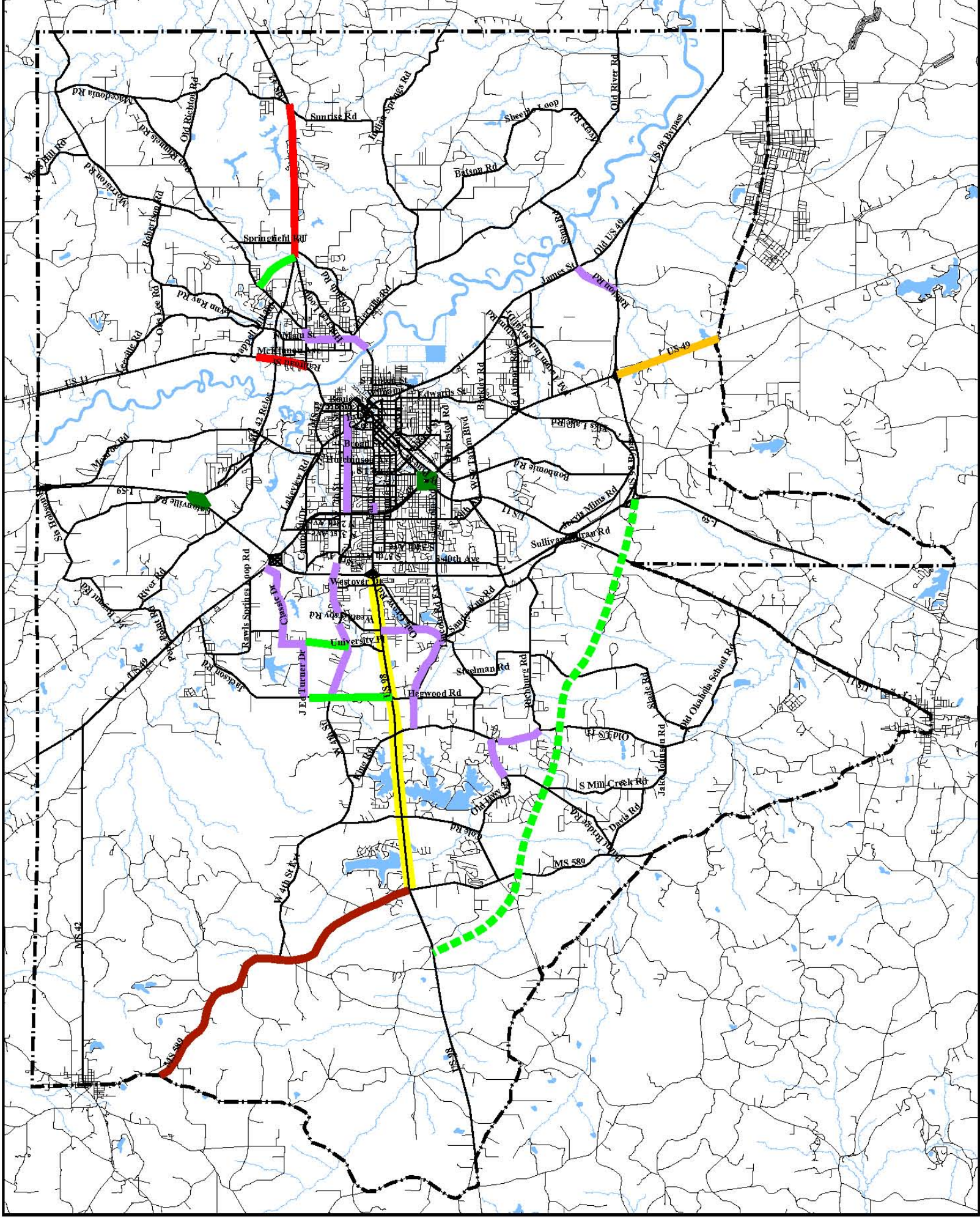
- Signal Corridor

Stage I Projects

- Widen (Add 2 Lanes)
- New Roadway
- Engineering
- Center Turn Lane
- Reconstruction
- Interchange Improvement
- Upgrade to Expressway

Scale: 0 .8 1.6 2.4 3.2 Miles

Source: Neel-Schaffer, Inc.



2030

Hattiesburg Urbanized Area Transportation Plan

Figure 7-4
Stage II Projects
2012 - 2020

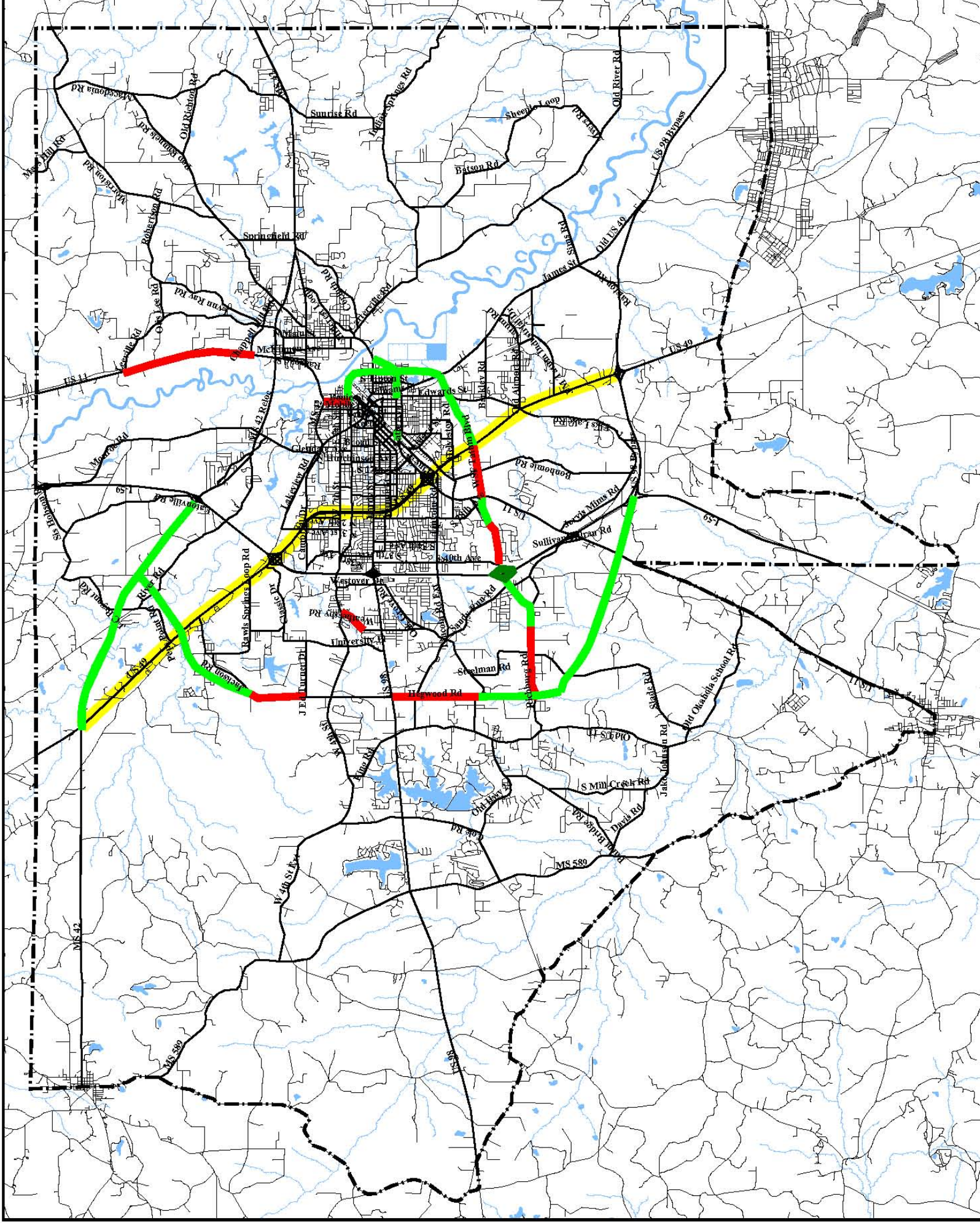
Legend

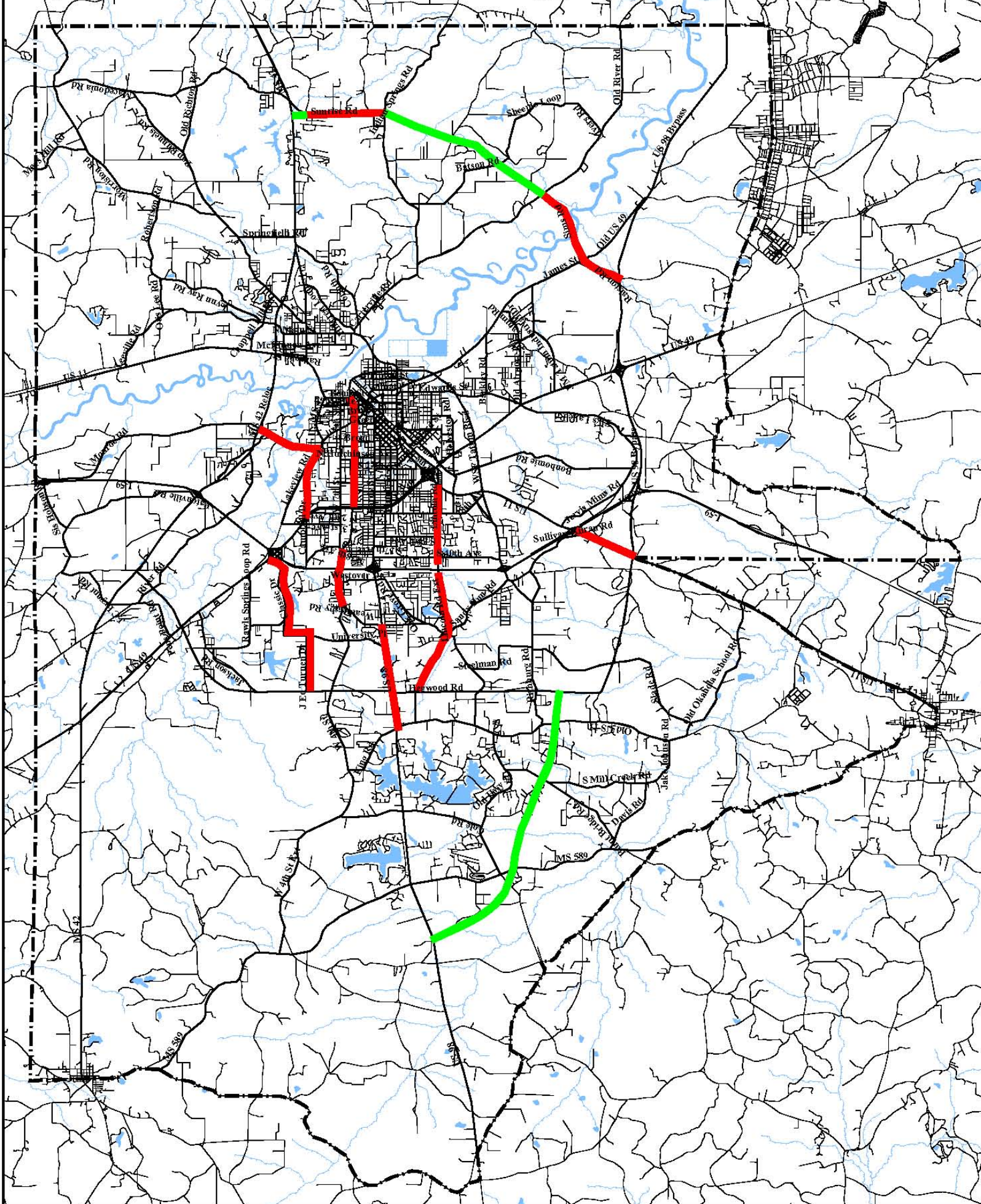
- ITS Projects
- Signal Corridors
- Stage II Projects
- Widen (Add 2 Lanes)
- New Roadway
- Interchange Improvement

8 0 .8 1.6 2.4 3.2
Miles



Source: Neel-Schaffer, Inc.








2030
Hattiesburg Urbanized Area
Transportation Plan

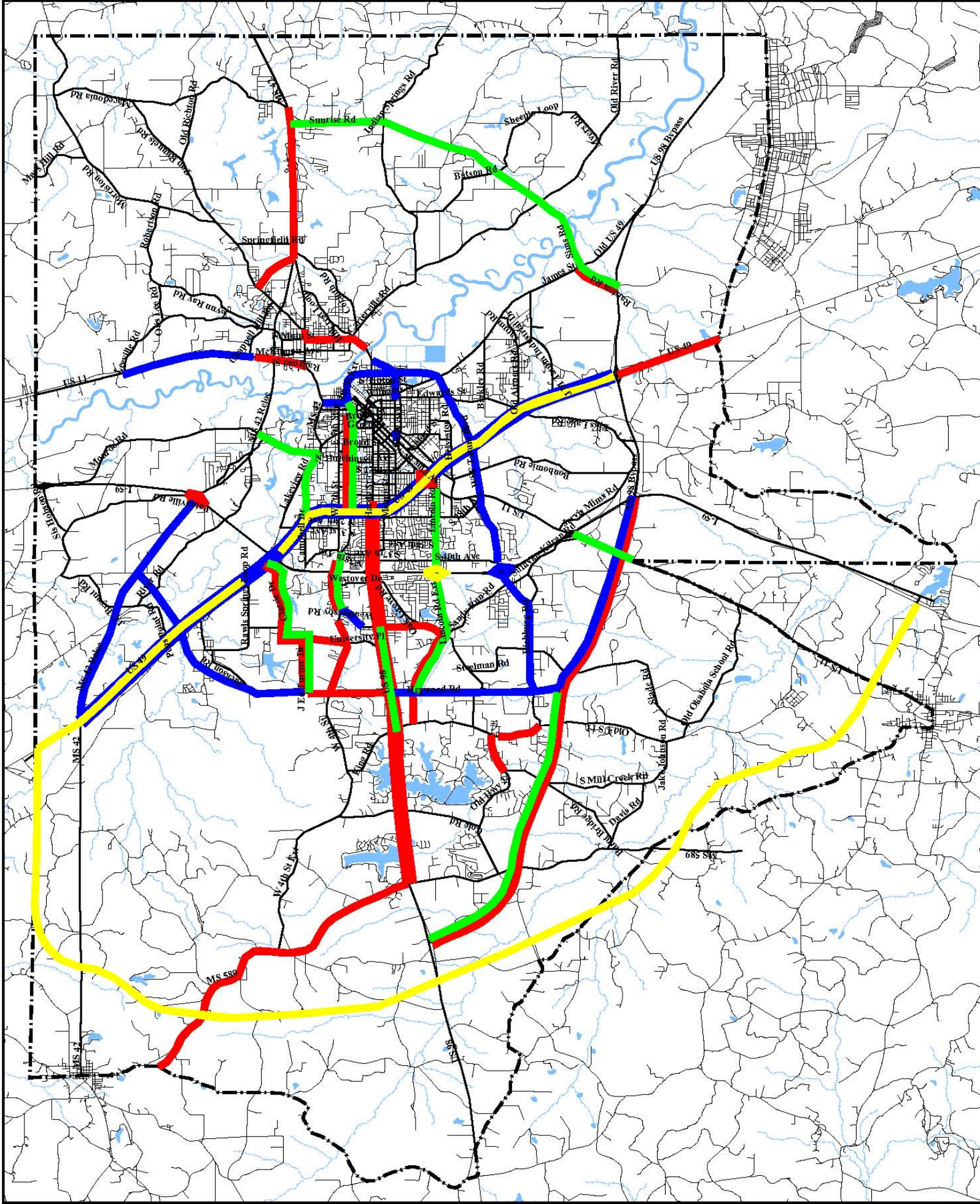
Figure 7-5
Stage III Projects
2021 - 2030

Legend

-  Study Area
-  Stage III Projects
Widen (Add 2 Lanes)
-  New Roadway

Source: Neel-Schaffer, Inc.





2030
Hattiesburg Urbanized Area
Transportation Plan

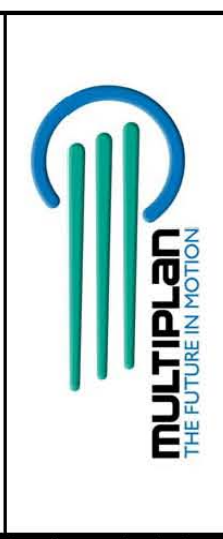
Figure 7-7
Stage Schedule

Legend

Stages

- █ Stage I Projects
- █ Stage II Projects
- █ Stage III Projects
- █ Vision Projects

Source: Neel-Schaffer, Inc.



For Planning Purposes Only.



COMPREHENSIVE PLAN 2008-2028

Parks

Legend

- Streets
- Water
- City Limits

Map Data Source:

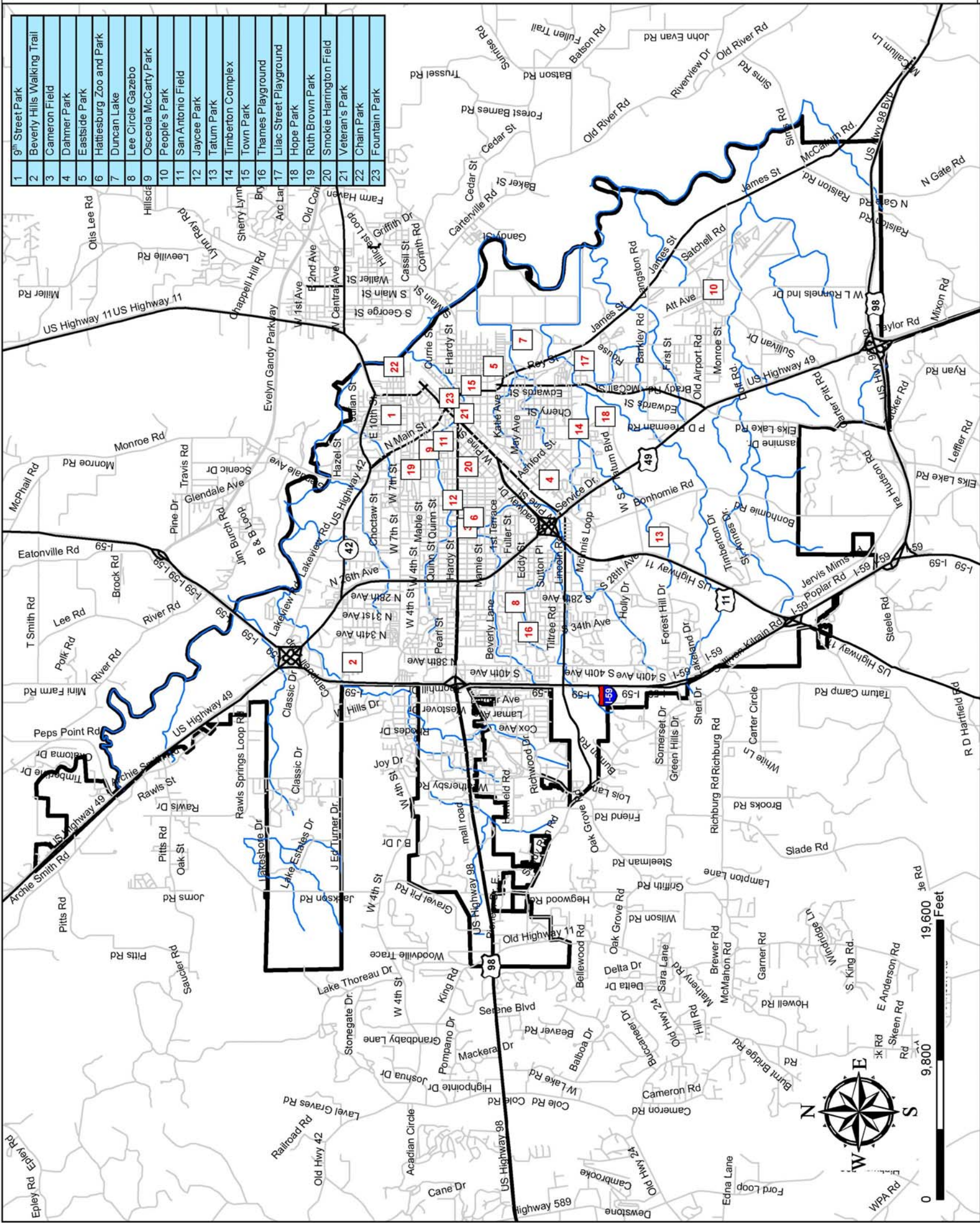
City of Hattiesburg
Department of Urban Development
Geographic Information Systems and the
Parks and Recreation Dept.

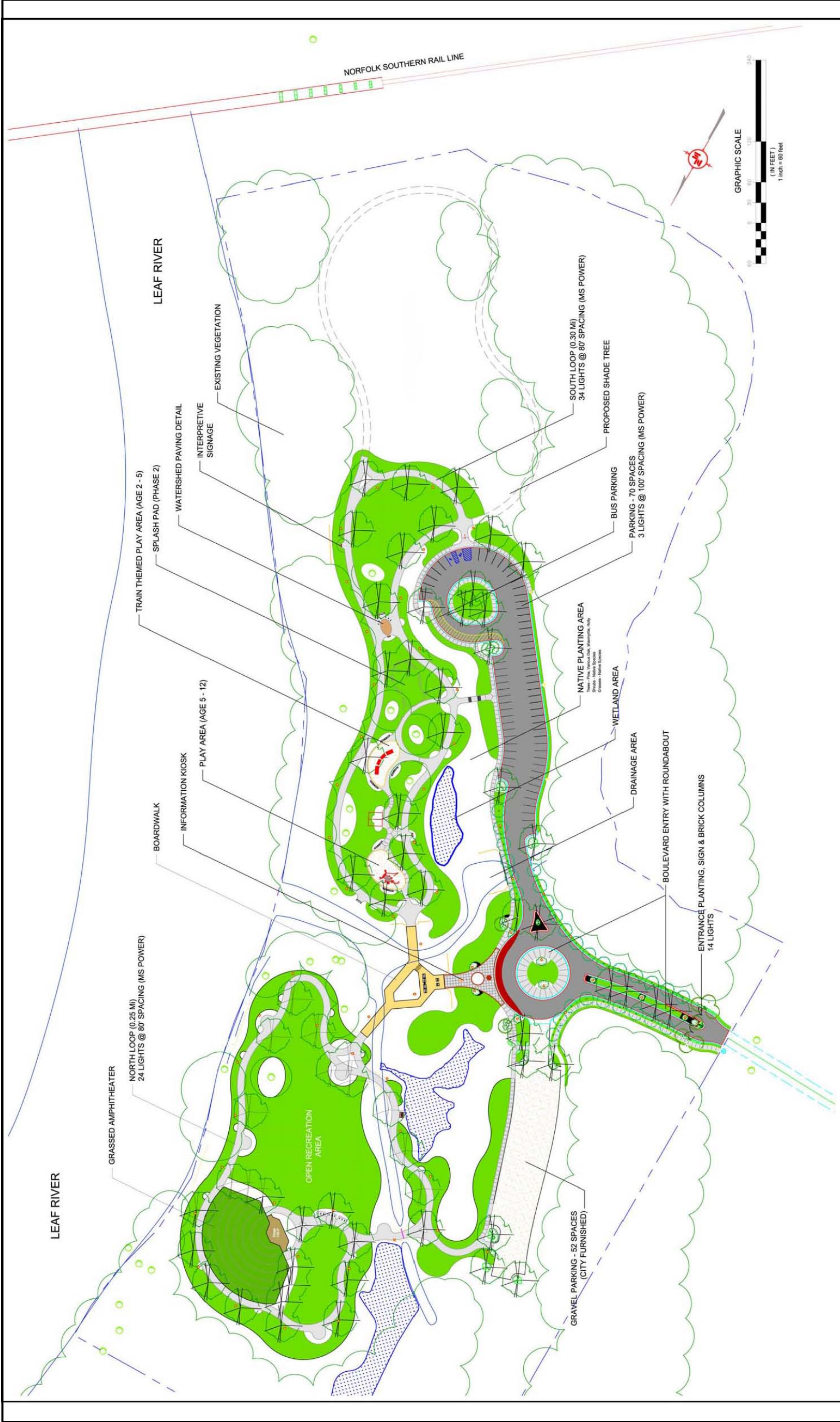
Date: April 1, 2008



Post Office Box 1487
Hattiesburg, MS 39403-1487
601.545.1565

| | |
|----|-----------------------------|
| 1 | 9th Street Park |
| 2 | Beverly Hills Walking Trail |
| 3 | Cameron Field |
| 4 | Dahmer Park |
| 5 | Eastside Park |
| 6 | Hattiesburg Zoo and Park |
| 7 | Duncan Lake |
| 8 | Lee Circle Gazebo |
| 9 | Osceola McCarty Park |
| 10 | People's Park |
| 11 | San Antonio Field |
| 12 | Jaycee Park |
| 13 | Tatum Park |
| 14 | Timberton Complex |
| 15 | Town Park |
| 16 | Thames Playground |
| 17 | Lilac Street Playground |
| 18 | Hope Park |
| 19 | Ruth Brown Park |
| 20 | Smokie Harrington Field |
| 21 | Veteran's Park |
| 22 | Chain Park |
| 23 | Fountain Park |





NOTICE TO DRAWING HOLDER
 NEEL-SCHAFFER, INC., HEREINAFTER REFERRED TO AS THE ENGINEER, HAS PREPARED THIS DRAWING FOR THE OWNER FOR USE ON THIS PROJECT ONLY. THIS DRAWING SHOULD NOT BE USED ON EXTENSIONS OF THIS PROJECT OR ON ANY OTHER PROJECT. ANY REUSE OF THIS DRAWING, WITHOUT WRITTEN PERMISSION OR ADAPTATION BY THE ENGINEER, SHALL BE AT THE REUSER'S SOLE RISK AND THE REUSER SHALL INDEMNIFY AND HOLD HARMLESS THE ENGINEER FROM ALL CLAIMS, DAMAGES, LOSSES AND EXPENSES, INCLUDING ATTORNEY'S FEES ARISING OUT OF OR RESULTING THEREFROM.

| NO. | DATE | BY | DESCRIPTION |
|-----|------|----|-------------|
| | | | |
| | | | |
| | | | |

DRAWING INFORMATION

| | |
|------------------|--------------|
| N-S PROJECT NO.: | 00.08647.001 |
| FILENAME: | MASTER.dwg |
| SCALE: | 1" = 60' |
| SURVEYED BY: | |
| DRAWN BY: | RFB |
| DATE: | 05/2008 |
| CHKD. BY: | RFB |
| DATE: | 05/2008 |
| DATE: | |

**CHAIN PARK
 AT TWIN FORKS**
 CITY OF HATTIESBURG
 PARKS & RECREATION DEPARTMENT
 HATTIESBURG, MISSISSIPPI

NEEL-SCHAFFER
Solutions you can build upon

PARK LAYOUT

| | |
|-----------------|-----------------|
| WORKING NUMBER: | DRAWING NUMBER: |
|-----------------|-----------------|