

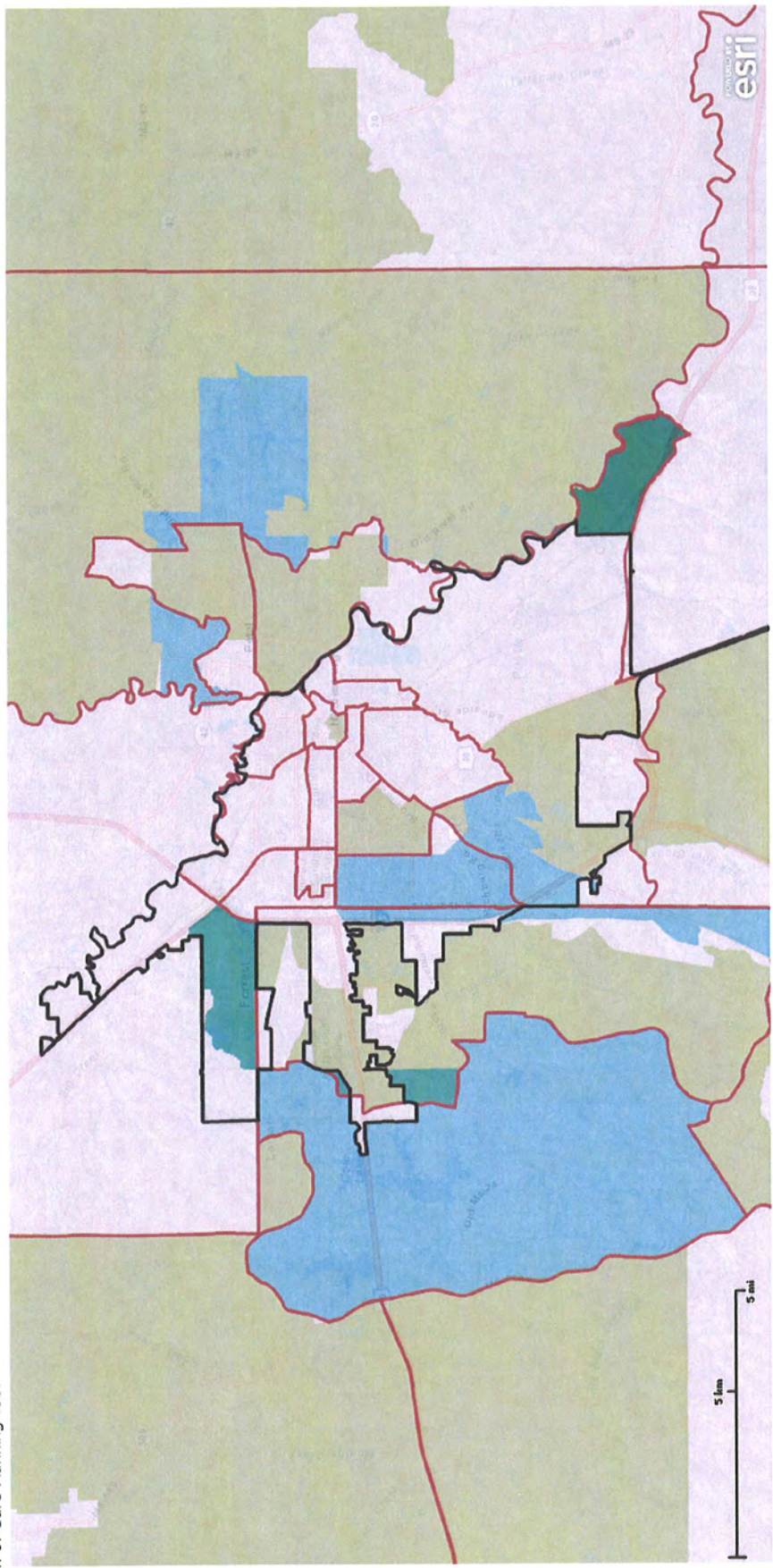
CPD Maps

Consolidated Plan and Continuum of Care Planning Tool

Median Household Income

- <\$37,719
- \$37,719-\$60,398
- \$60,398-\$91,449
- \$91,449-\$151,632
- >\$151,632

Census Tracts

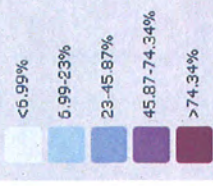


Copyright 2011-2012 HUD. All rights reserved. Mon Oct 29 2012 02:41:15 PM.

CPD Maps

Consolidated Plan and Continuum of Care Planning Tool

Black or African American alone (n)



Census Tracts

